



# Sykes Student Union

Building Specific Fire Safety Information

# Life Safety Systems



Sykes Student Union is equipped with:

- Fire Detection
- Evacuation Alarms
- Fire Sprinklers
- Kitchen Hood Fire Suppression

All fire alarms are monitored by Public Safety

# Life Safety Systems



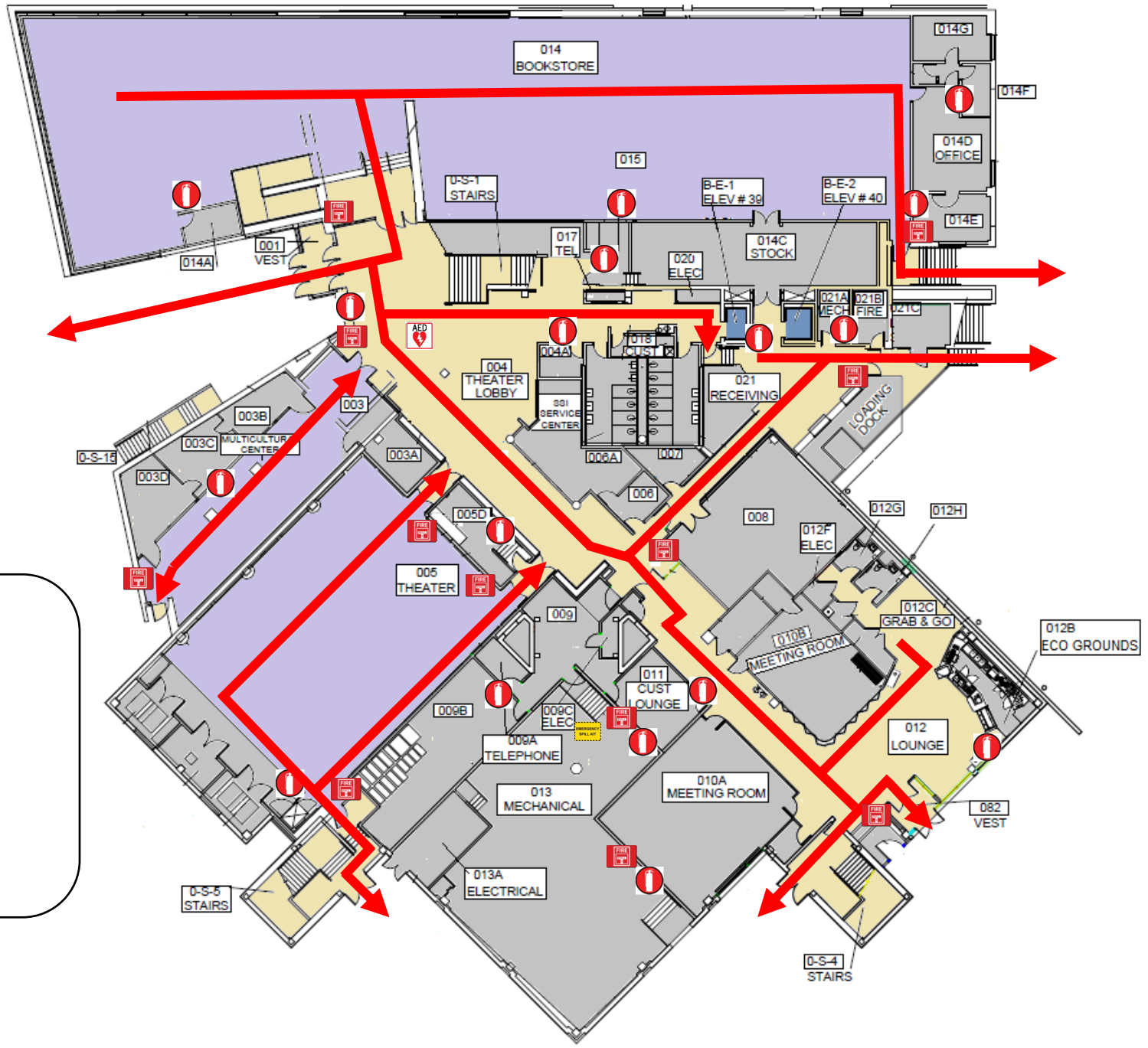
## Sykes Student Union is equipped with:

- Public Address System that alerts all areas of the building
- Emergency Call boxes/Buttons in Stair towers and Elevators that contact Public Safety Dispatcher
- AED by the School Store (ground floor) and by the Information desk (1<sup>st</sup> floor)
- Evac Stair Chair in stair tower behind Information desk (1<sup>st</sup> floor)

# Fire Safety Maps

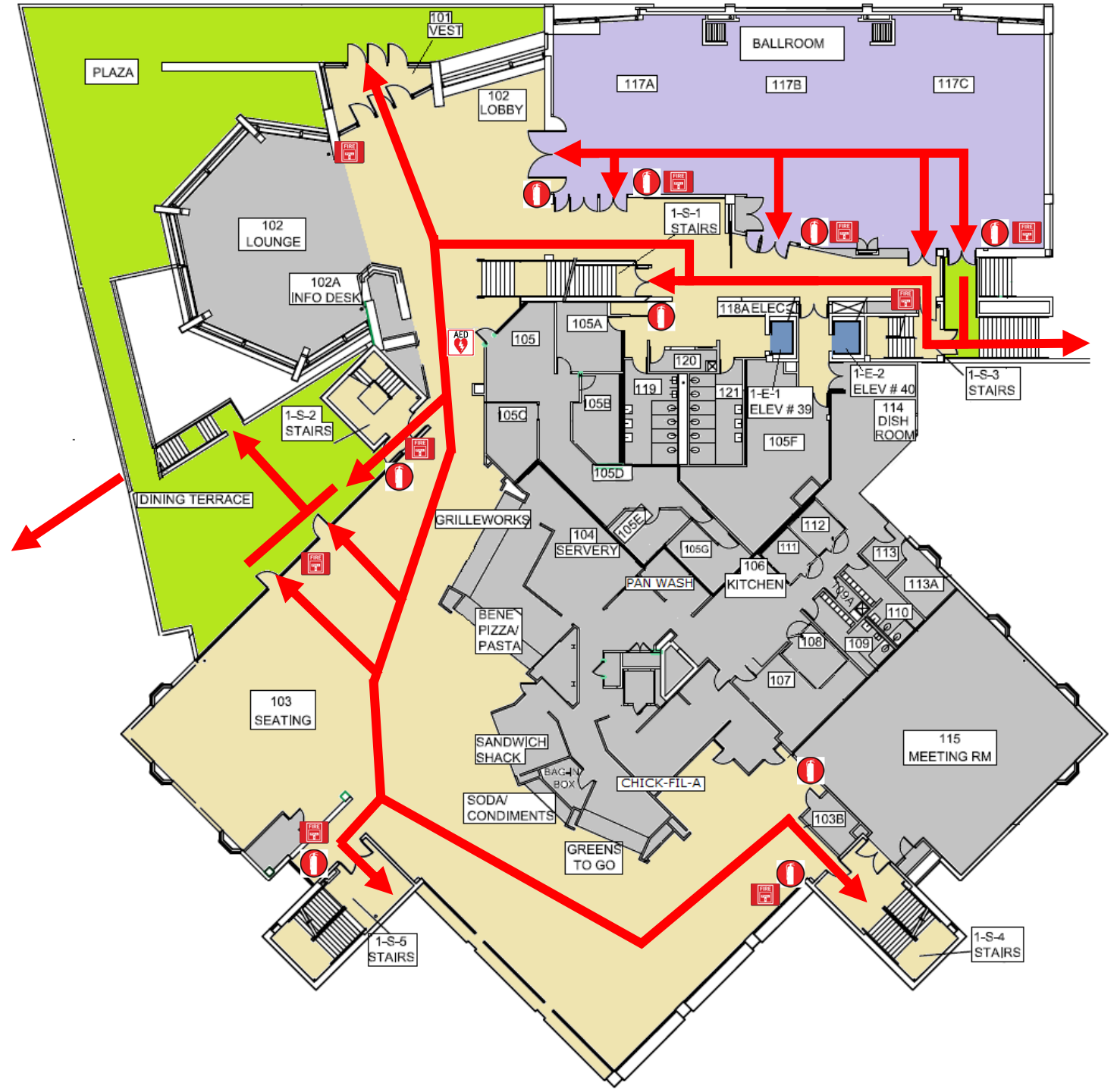
Maps of relevant Fire safety equipment, Evacuation routes, and Areas of Rescue Assistance

# SYKES UNION GROUND FLOOR






# SYKES UNION

## 1<sup>ST</sup> FLOOR



### LEGEND





-  -FIRE EXTINGUISHER
-  -ALARM PULL STATION
-  -A.E.D.

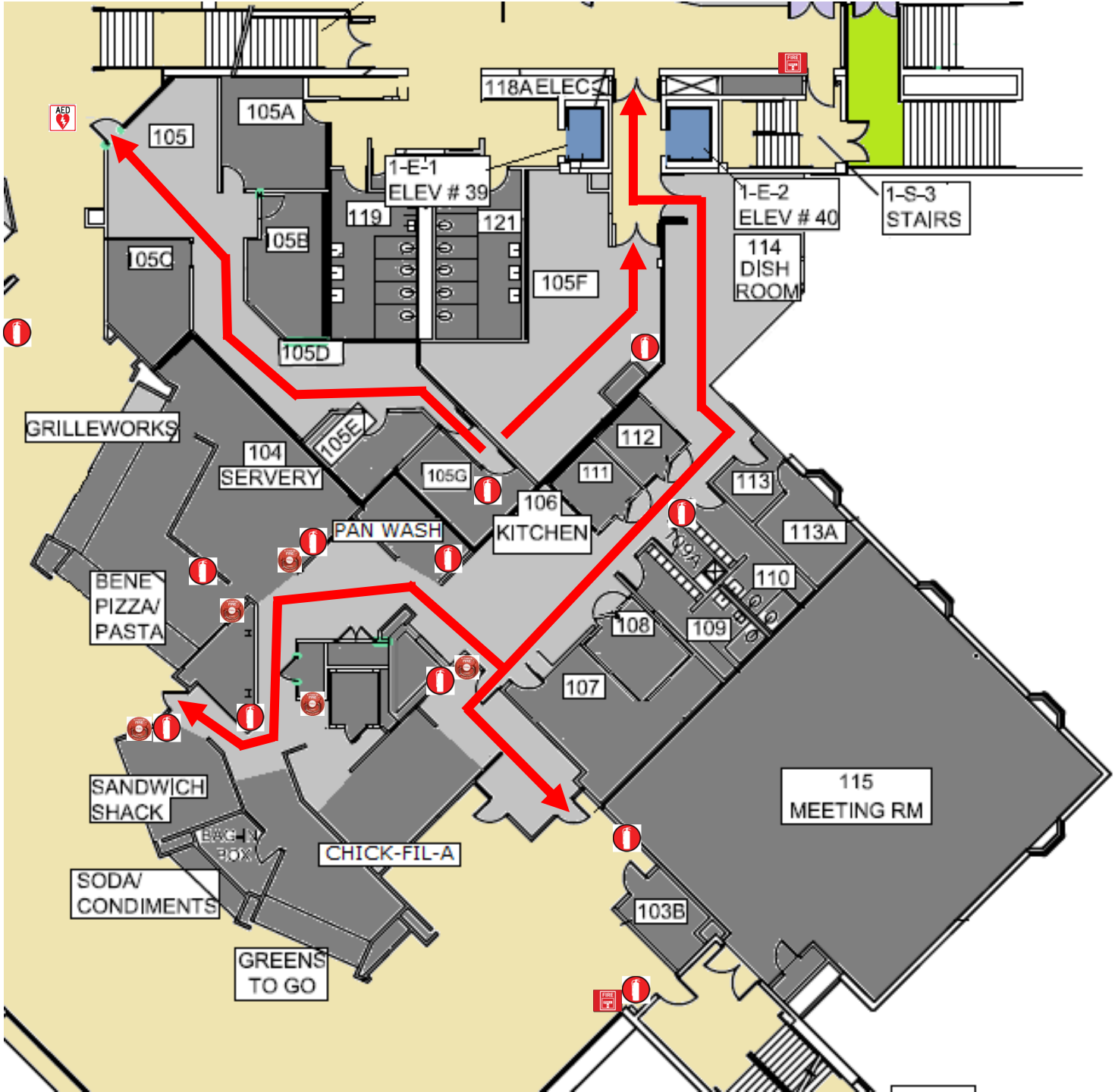
# SYKES UNION

## 1<sup>ST</sup> FLOOR

### Offices & Kitchen

#### LEGEND

-  - FIRE EXTINGUISHER
-  - ALARM PULL STATION
-  - HOOD SUPPERSSION PULL STATION
-  - A.E.D



# SYKES UNION

## 2<sup>ND</sup> FLOOR



### LEGEND



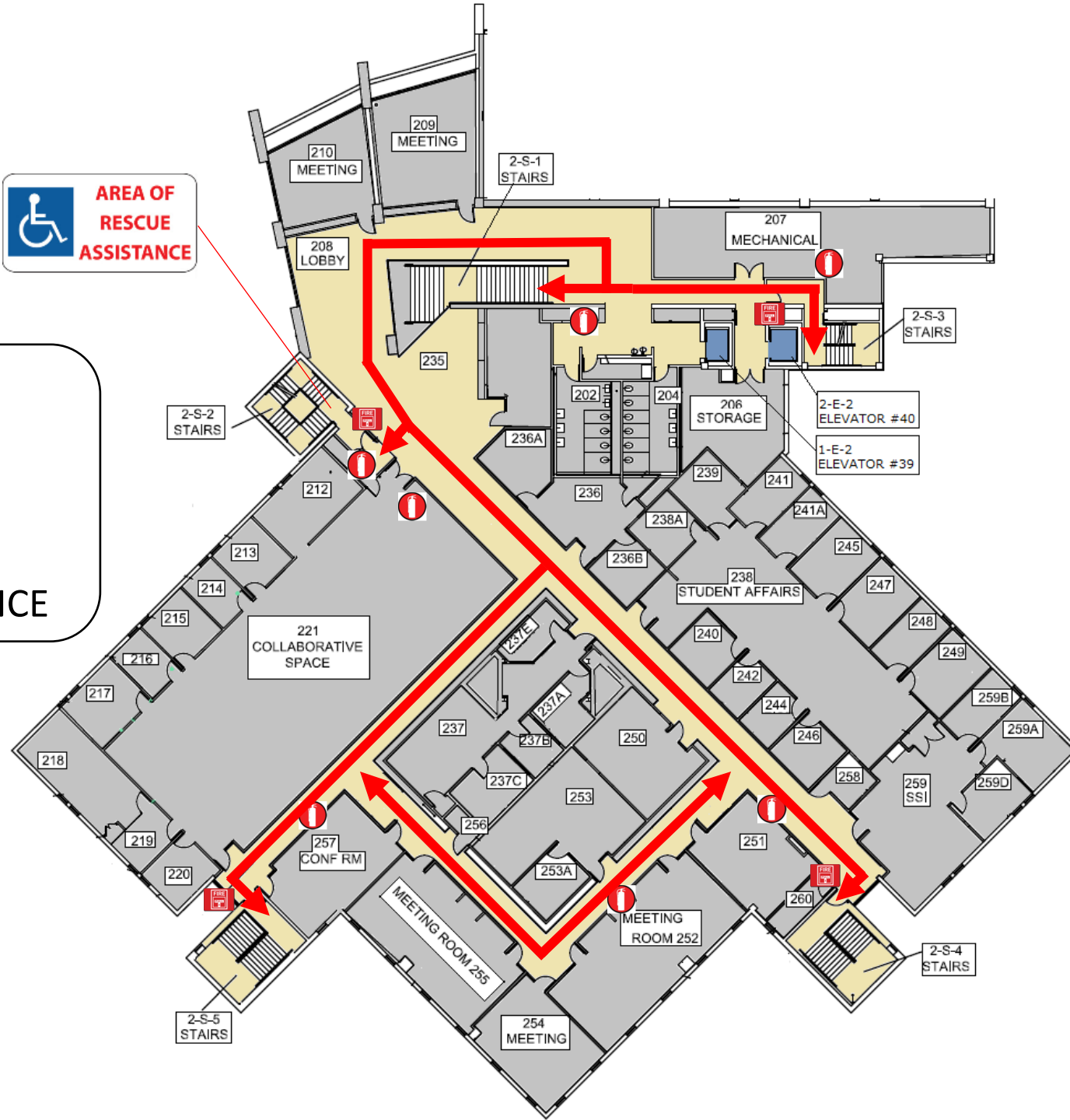
- FIRE EXTINGUISHER



- ALARM PULL STATION



- AREA OF RESCUE ASSISTANCE







# Designated Meeting Place

On the lawn at Ram Park

Check for traffic while crossing parking lot

Do not gather in the parking lot

Managers should take attendance of their employees

Faculty with classes should take attendance of their students

W. Rosedale Ave.

SYKES UNION



Ram Park

Norfolk Ave.

# Reporting a Fire

If you discover smoke or flame, immediately initiate the following actions:

- Activate the fire alarm system by pulling a manual pull station or verbally notify the building's occupants of the fire if the alarm system is not functioning.
- Evacuate from the building and report to the Designated Meeting Location and await further instruction from a Public Safety representative.
- Even if the fire alarm system has already been activated, (at safe distance from the fire) contact the Public Safety Department at 610-436-3311 to report the fire.





If the building fire alarm activates:

- **All occupants** are required to **evacuate immediately** by using the closest available exit point. Evacuations should be conducted in a calm and orderly manner.
- When evacuating the building, only take essential belongings. This includes items such as keys, WCU ID, wallets, purses, **coats**, medications, etc.
- When evacuating the building, remember to turn off lights and close doors to rooms as you leave.

Evacuation by Fire Alarm

**Building Fire Alarm**



- While evacuating remind others to leave the building and ask if they need assistance. If you are unable to assist or they are unwilling to evacuate; continue evacuating yourself and notify Public Safety of their location.
- Proceed to the Designated Meeting Location and stay there
- Upon receiving an “ALL CLEAR” from Public Safety, staff will assist occupants with re-entry into the building

Evacuation by Fire Alarm

**Building Fire Alarm**

# Anyone who needs assistance evacuating

- Occupants that cannot evacuate the building on their own should proceed to the closest **Area of Rescue Assistance or the landing of an enclosed stairway**
- After arriving at the **Area of Rescue Assistance or the landing of an enclosed stairway**, contact Public Safety at **(610) 436-3311** to advise them of your location
- If getting to the Area of Rescue Assistance is not possible, stay in your room with the door closed. Contact Public Safety at **(610) 436-3311** and let the dispatcher know your location
- Before an emergency, Environmental Health & Safety can help you identify egress routes, Areas of Rescue Assistance, and develop a personal evacuation plan. **(610) 436-3333**

# Additional Fire Safety Information

- Please visit [Fire Safety page on WCUPA.EDU](#)
- If you have questions or concerns; Contact **Environmental Health & Safety at 610-436-3333**



*Environmental  
Health & Safety*

