

FACT BOOK 2013

WEST CHESTER UNIVERSITY OF PENNSYLVANIA

West Chester University of Pennsylvania Office of Institutional Research

**887 South Matlack Street
West Chester, PA 19383
Telephone (610) 436-2835**

Fax (610) 436-2635

Introduction & Acknowledgements

This Fact Book provides some of the most commonly requested information about West Chester University. Much of the information is drawn from the University's database and state mandated reports. Other offices and sources used are cited throughout the document. The cooperation of those offices and sources is much appreciated.

The Fact Book is divided into several chapters: Admissions, Enrollment, Retention/Graduation Rates, Academic Degree Programs & Accredited Programs, Graduation/Degree Information, and Resources (including financial aid), Services and Facilities.

Comments and suggestions about additional information that might be included are much appreciated. Please forward your suggestions to ninamdar@wcupa.edu .

Additional institutional information is available on our website: <http://www.wcupa.edu/infoservices/oir/>

Table of Contents

Table of Contents	2-3
WCU Quick Facts	4
GENERAL INFORMATION	
About the University and Its Mission	6-8
West Chester University Organizational Chart	9
ADMISSIONS	
Undergraduate Admissions Standards	11
Admission Application Statistics	12-13
First Time Full-Time Freshmen by Admission Type	14
SAT Score Distribution: Fall 2013	15-16
SAT Average Scores	16
Feeder High Schools: Fall 2013	17
Feeder Colleges: Fall 2013	18
First Time Freshmen Enrollment by County	19
First Time Freshmen Enrollment by State	20
Admission Yield Statistics: Fall 2013	21
First-Time Freshmen Admission Yield	22
First-Time Transfer Admission Yield	23-24
ENROLLMENT	
Head Count Enrollment by Race/Ethnicity and Gender	26
Head Count Enrollment by Degree Status and College Fall 2013	27
Head Count Enrollment by State: Fall 2010 to 2013	28-29

To be continued.....

Table of Contents (continued)

ENROLLMENT (continued)

Enrollment by Pennsylvania County of Residence: Fall 2013	30
Head Count Enrollment by Ethnicity and Gender Fall 2009 to Fall 2013	31
Head Count Enrollment by College : Fall 2009 to Fall 2013	32-33
Head Count Enrollment by Student Level: Fall 2008 to 2013	34-35
Credit Hours and Student FTE Enrollment	36-37

RETENTION AND GRADUATION

Retention & Graduation Rates for First-Time, Full-Time Freshmen: University Summary	39
Second-Year Retention Rates for First-Time, Full-Time Freshmen by Race/Ethnicity and by Gender	40
Four and Six-Year Graduation Rates by Race/Ethnicity	41
Four and Six-Year Graduation Rates by Gender	42

ACADEMIC AND DEGREE PROGRAMS

Undergraduate Degrees and Majors	44-45
Graduate Degrees and Majors	46-47
Professional and Program Accreditations	48-49

DEGREES CONFERRED

Undergraduate and Graduate Degrees Conferred by College and Academic Plan	51-71
---	-------

RESOURCES, SERVICES & FACILITIES

Tuition and Fees	73
Library Resources	75

Quick Facts

West Chester University
West Chester, PA 19383
Telephone (610) 436-1000
<http://www.wcupa.edu/>

Founded	1871
President	Dr. Greg R. Weisenstein
University Accreditation	Middle States Commission on Higher Education (MSCHE)
Fall 2013 Enrollment	15,847
Undergraduate	13,713
Graduate	2,134
Fall 2013 Credit Hours	208,312.5
Undergraduate	194,232.5
Graduate	14,080.0
Undergraduate Degree Programs	116
Undergraduate Certificates	6
Undergraduate Non-Degree, Teacher Certification	45
Graduate Degree Programs	
Master's Programs	84
Doctorate Program	1
Graduate Certificates	34
Graduate Non-Degree, Teaching Certification, Professional Growth, Degrees Awarded in 2012-2013	75
	3,686
Bachelor's	2,972
Master's	714



General Information

About the University and Its Mission

The West Chester University Mission Statement

West Chester University, a member of the Pennsylvania State System of Higher Education, is a public, regional, comprehensive institution committed to providing access and offering high-quality undergraduate education, select post-baccalaureate and graduate programs, and a variety

The West Chester University Values Statement

West Chester University is committed to attracting, enrolling, and graduating quality students from a wide variety of educational, cultural, and economic backgrounds. This endeavor requires the University to attract and retain highly qualified faculty and staff and to provide each member of the University community with learning and leadership development opportunities. To this end, the University supports and encourages programs which benefit all people and which seek to eradicate discrimination and injustice. We treasure what we believe to be the highest principles of American society: the worth and uniqueness of each individual, the belief that success is to be earned by individual effort put forth in an environment founded on equality of opportunity, and the appreciation of the ideal of an inclusive society.

We believe that it is incumbent upon all members of our community—staff, students, faculty and administrators—to conduct themselves with civility toward one another at all times. We value the special talents and contributions of each member of our community. We further affirm the worth and dignity of each member and the shared responsibility of all to treat each other as individuals, with respect and courtesy.

As a university owned by the citizens of Pennsylvania, we value our mission to provide the best educational opportunities possible which will enable the University community to successfully address the concerns of a global society. To this end, West Chester University seeks to provide diligent advising for students and to focus on teaching students to think clearly and critically, to make logical and ethical judgments, and to communicate effectively with others.

West Chester University's community strongly supports the principles of academic integrity and academic responsibility, viewing both as the province of every member of the campus community. We hold the highest esteem for teaching directed toward student learning and affirm that mastery of content as well as mastery of teaching skills necessary to communicate such content is paramount.

This values statement is intended to be a living document which will serve West Chester University as it changes and evolves in the coming years.

About West Chester University of Pennsylvania

West Chester University offers bachelors and masters degrees in the arts and sciences, teacher training and certification, advanced study preparation in fields such as medicine and law, education for specific professions, and continuing education.

Total enrollment at West Chester University includes approximately 13,713 undergraduate students and 2,134 graduate students. While most undergraduates are recent high school graduates preparing for career objectives, many others are older individuals, including veterans and

Most students are residents of Pennsylvania but students from other states and foreign countries are welcome. The student body at West Chester University represents a cross section of many ethnic, racial, and religious groups and includes students from all socioeconomic levels.

Like the world around it, West Chester University is constantly transforming. The school continues to broaden and modify the nature and number of its programs to reflect the needs of its students in their endeavor to prepare themselves for success and fulfillment in life.

The History of West Chester University of Pennsylvania

Founded in 1871, West Chester University began as West Chester Academy, a private, state-aided school that existed from 1812 to 1869. The academy enjoyed strong support from the highly intellectual Chester County Cabinet of the Natural Sciences of the pre-Civil War decades. It was recognized as one of Pennsylvania's leading preparatory schools, and its experience in teacher training laid the groundwork for the normal school years that were to follow.

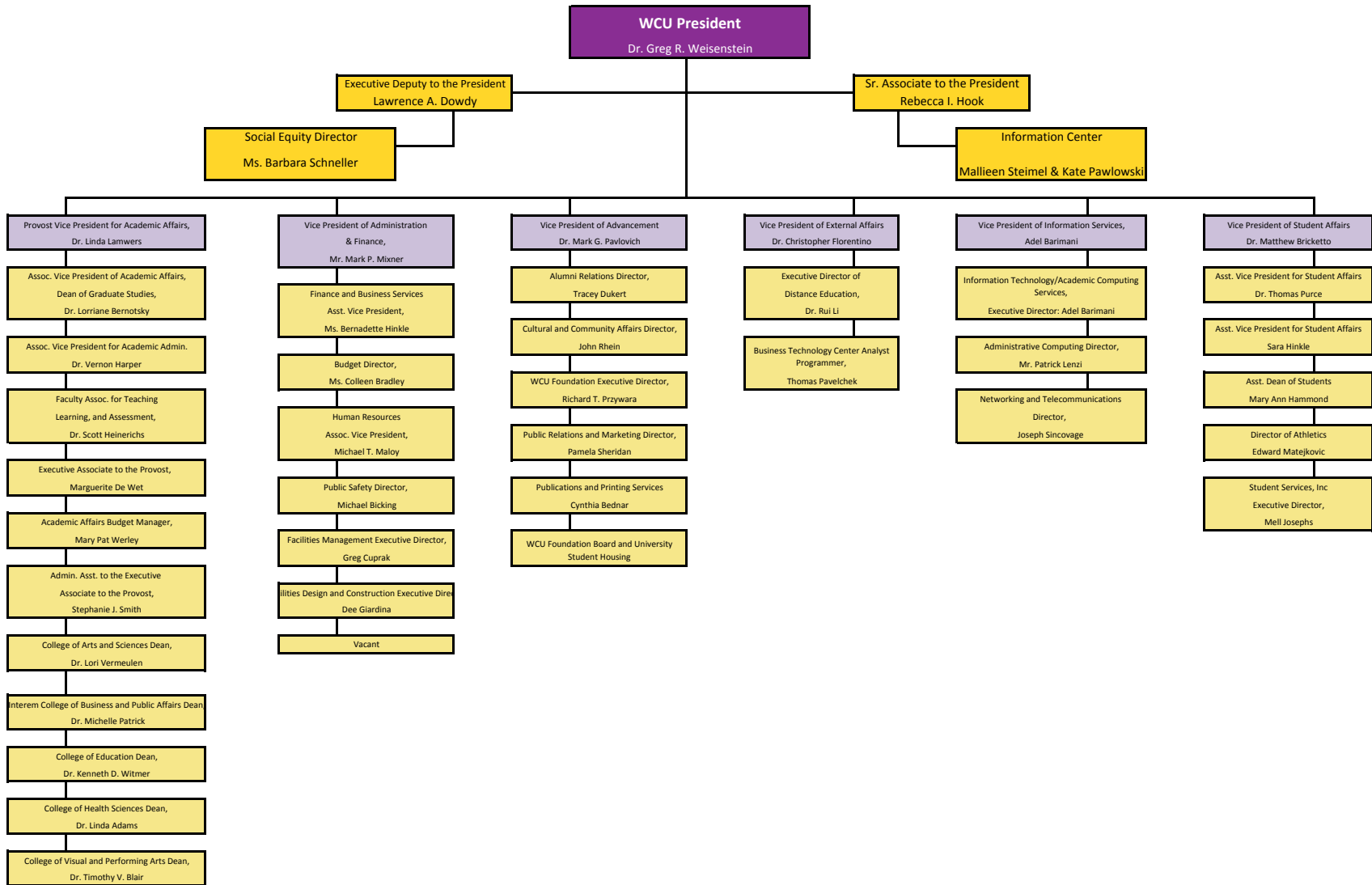
As the state began to take increasing responsibility for public education, the academy was transformed into West Chester Normal School, still privately owned but state certified. The normal school admitted its first class, consisting of 160 students, on September 25, 1871. In 1913, West Chester became the first of the normal schools to be owned outright by the Commonwealth.


West Chester became West Chester State Teachers College in 1927 when Pennsylvania initiated a four-year program of teacher education. In 1960, as the Commonwealth paved the way for liberal arts programs in its college system, West Chester was renamed West Chester State College, and two years later introduced the liberal arts program that turned the one-time academy into a comprehensive college.

In recognition of the historic merit of the campus, in 1981 the West Chester State College Quadrangle Historic District was placed on the National Register of Historic Places. The buildings included in this historic district are Philips Memorial Building, Ruby Jones Hall, Recitation Hall, and the Old Library. Except for Philips, these buildings are all constructed of native Chester County serpentine stone.

West Chester State achieved another major milestone with passage of the State System of Higher Education bill. West Chester became one of the 14 universities in the State System of Higher Education on July 1, 1983. Along with its new name -- West Chester University of Pennsylvania of the State System of Higher Education -- the institution acquired a new system of governance and the opportunity to expand its degree programs.

Organizational Chart





ADMISSIONS

Undergraduate Admissions Standards

West Chester University prides itself on the holistic approach used in evaluating applicant credentials. Each application is reviewed individually, and we carefully consider scholastic performance and academic preparation to determine an individual's potential for success.

For regular admission as a first-year student we recommend successful completion of a college preparatory curriculum in high school, honors and AP classes are a plus, rank in class in the 50th percentile or better, a grade point average of 3.00+, and a minimum combined SAT score of 1020 or better (prefer a minimum of 500 in both verbal and math). It is important to realize that these factors are guidelines for consideration. The academic profile of the regular admits who enroll at West Chester University is a mean SAT combined score of 1079, a rank in the top third of their class or 69% percentile, and a grade point average of 3.53.

Applicants who do not meet regular admissions standards may be considered for a special admissions program if appropriate or denied admission and counseled to enroll at another college or university for a minimum of 24-30 credits before reapplying as a transfer student.

Transfer applicants must have a minimum grade point average of 2.00 for admissions consideration. The majority of our transfers have a Cumulative GPA of 2.50 or better prior to transferring to the University. Some of our academic programs require a higher grade point average and specific course prerequisites. Pennsylvania Community College students who have earned an Associate of Arts or Associate of Science degree and students who have completed 12 or more transferable credits from a State System University with a 2.00 or above have an Academic Passport that provides entry into any university in the State System of Higher Education. For more information on admissions requirements and the Academic Passport, please contact the Office Admissions at (610) 436-3411 or e-mail ugadmiss@wcupa.edu

Admission Application Statistics for First Time, Full Time, First Year Students Fall 2013

Ethnicity	Fall 2012			Fall 2013			Total	
	Male	Female	Total	Male	Female	Total	Change	% Change
African American								
Applied	626	1,051	1,677	526	954	1,480	-197	-11.75%
Accepted	191	331	522	221	393	614	92	17.62%
Enrolled	80	131	211	97	134	231	20	9.48%
Asian								
Applied	157	232	389	150	246	396	7	1.80%
Accepted	64	100	164	61	113	174	10	6.10%
Enrolled	19	28	47	18	30	48	1	2.13%
Caucasian								
Applied	4,189	6,883	11,072	3,737	6,619	10,356	-716	-6.47%
Accepted	2,115	3,740	5,855	1,918	3,569	5,487	-368	-6.29%
Enrolled	695	1,186	1,881	616	1,195	1,811	-70	-3.72%
Hawaiian/Pacific Islander								
Applied	4	8	12	3	3	6	-6	-50.00%
Accepted	1	3	4	1	0	1	-3	-75.00%
Enrolled	0	2	2	1	0	1	-1	-50.00%
Hispanic								
Applied	292	478	770	285	474	759	-11	-1.43%
Accepted	166	255	421	145	255	400	-21	-4.99%
Enrolled	56	80	136	52	70	122	-14	-10.29%
Native American								
Applied	4	6	10	2	7	9	-1	-10.00%
Accepted	2	1	3	0	2	2	-1	-33.33%
Enrolled	0	0	0	0	1	1	1	
NRA-International								
Applied	26	26	52	16	24	40	-12	-23.08%
Accepted	5	13	18	8	11	19	1	5.56%
Enrolled	1	2	3	2	0	2	-1	-33.33%

Admission Application Statistics for First Time, Full Time, First Year Students: Fall 2013 (continued)

Ethnicity	Fall 2012			Fall 2013			Total	
	Male	Female	Total	Male	Female	Total	Change	%Change
Multiracial								
Applied	123	243	366	142	248	390	24	6.56%
Accepted	61	112	173	79	146	225	52	30.06%
Enrolled	18	28	46	24	52	76	30	65.22%
Not Supplied							0	
Applied	4	4	8	1	1	2	-6	-75.00%
Accepted	1	0	1	0	0	0	-1	-100.00%
Enrolled	0	0	0	0	0	0	0	0.00%
Total								
Applied	5,425	8,931	14,356	4,862	8,576	13,438	-918	-6.39%
Accepted	2,606	4,555	7,161	2,433	4,489	6,922	-239	-3.34%
Enrolled	869	1,457	2,326	810	1,482	2,292	-34	-1.46%

First Time, Full Time, First Year Students by Admission Type

Admittance Type	2009		2010		2011		2012		2013	
	N	%	N	%	N	%	N	%	N	%
Regular	1,847	82.4	1,713	83.1	1,893	82.9	1,935	83.2	1893	82.60%
ADP ACT 101	54	2.4	57	2.8	55	2.4	51	2.2	73	3.20%
ADP Non-ACT 101	109	4.9	101	4.9	104	4.6	103	4.4	108	4.70%
Special Admission	231	10.3	191	9.3	231	10.1	237	10.2	218	9.50%
Total	2,241		2,062		2,283		2,326		2,292	100%

SAT Score Distribution: First Time, Full Time, First Year Students Fall 2013

SAT- Critical Reading Distribution

Score	2009		2010		2011		2012		2013	
	N	%	N	%	N	%	N	%	N	%
700 - 800	26	1.4	61	3	37	1.6	28	1.2	29	1.30%
600 - 699	287	13	484	23.5	392	17.2	396	17	363	15.80%
500 - 599	1,207	52.6	1,163	56.4	1,249	54.7	1,260	54.2	1,261	55.00%
400 - 499	654	29.7	328	15.9	547	24	585	25.2	576	25.10%
300 - 399	67	3	25	1.2	57	2.5	57	2.5	62	2.70%
200 - 299	0	0	0	0	1	0	0	0	0	0%
No Scores	0	0	1	0	0	0	0	0	1	0.00%
Total	2,241	100%	2,062	100%	2,283	100%	2,326	100%	2,292	100%

SAT- Mathematics Distribution

Score	2009		2010		2011		2012		2013	
	N	%	N	%	N	%	N	%	N	%
700 - 800	26	1.2	38	3.1	27	1.2	33	1.4	38	1.70%
600 - 699	532	17.6	450	18.2	443	19.4	478	20.6	495	21.60%
500 - 599	1,223	54.6	1,135	55.1	1,330	55.1	1,348	58	1,293	56.40%
400 - 499	394	23.6	375	21.8	427	18.7	428	18.4	387	16.90%
300 - 399	66	2.9	63	1.8	56	2.5	39	1.7	78	3.40%
200 - 299	0	0	0	0	0	0	0	0	0	0.00%
No Scores	0	0	1	0	0	0	0	0	1	0.00%
Total	2,241	100%	2,062	100%	2,283	100%	2,326	100%	2,292	100%

SAT Score Distribution: First Time, Full Time, First Year Students Fall 2013 (continued)

SAT – Writing Distribution

Score	2009		2010		2011		2012		2013	
	N	%	N	%	N	%	N	%	N	%
700-800	20	0.9	29	1.4	30	1.3	18	0.1	21	0.90%
600-699	308	13.7	315	15.3	331	14.8	335	14.4	368	16.10%
500-599	1,196	53.4	1,046	50.7	1,166	52.1	1,222	52.5	1,127	49.20%
400-499	617	27.5	564	27.4	642	28.7	633	27.2	619	27%
300-399	70	3.1	69	3.3	69	3.1	69	3	90	3.90%
200-299	1	0	2	0.1	0	0	0	0	2	0.10%
No Scores	29	1.3	37	1.8	0	0	49	2.1	65	2.80%
Total	2,241	100%	2,062	100%	2,283	100%	2,326	100%	2,292	100%

SAT Average Scores

	Critical Reading			Mathematics			Writing			Combined*		
	WCU	PA	US	WCU	PA	US	WCU	PA	US	WCU	PA	US
Fall 2004	529	501	508	532	502	518				1,061	1,003	1,026
Fall 2005	532	501	508	535	503	520				1,067	1,004	1,028
Fall 2006	527	493	503	535	500	518				1,062	993	1,028
Fall 2007	525	493	502	533	499	515				1,059	992	1,017
Fall 2008	523	494	502	535	501	515	521	483	494	1,059	995	1,017
Fall 2009	523	493	501	535	501	515	524	483	493	1,059	994	1,016
Fall 2010	544	492	501	533	501	516	528	480	492	1,078	993	1,017
Fall 2011	535	493	497	542	501	514	528	479	489	1,078	994	1,011
Fall 2012	532	491	496	545	501	514	516	480	488	1,077	992	1,010
Fall 2013	534	494	496	545	504	514	528	482	488	1,079	998	1,010

*Combined Critical Reading and Mathematics scores

Feeder High Schools: Fall 2013

Pennsylvania High Schools With the Most Number of Entering First Year Students

<i>School</i>	<i>#</i>
HAVERFORD TOWNSHIP SR HIGH SCHOOL	31
EAST SENIOR HIGH SCHOOL	30
DOWNINGTOWN HIGH SCHOOL – WEST	30
SPRING-FORD SENIOR HIGH SCHOOL	29
B REED HENDERSON HIGH SCHOOL	27
DOWNINGTOWN HIGH SCHOOL - EAST	26
NORTH PENN HIGH SCHOOL	26
NESHAMINY HIGH SCHOOL	26
GARNET VALLEY HIGH SCHOOL	25
CENTRAL BUCKS HIGH SCHOOL EAST	22
BAYARD RUSTIN HIGH SCHOOL	22
CENTRAL BUCKS HIGH SCHOOL SOUTH	22
AVON GROVE HIGH SCHOOL	21
CONESTOGA HIGH SCHOOL	20
COATSVILLE AREA SR HIGH SCHOOL	19
COUNCIL ROCK HIGH SCHOOL NORTH	19
GREAT VALLEY HIGH SCHOOL	19
PENNCREST HIGH SCHOOL	18
PENNSBURY HIGH SCHOOL EAST	18
PHOENIXVILLE AREA HIGH SCHOOL	18
CENTRAL BUCKS HIGH SCHOOL WEST	17

<i>School</i>	<i>#</i>
BISHOP SHANAHAN HIGH SCHOOL	17
OXFORD AREA HIGH SCHOOL	17
COUNCIL ROCK HIGH SCHOOL SOUTH	17
CENTRAL DAUPHIN HIGH SCHOOL	16
UPPER DARBY HIGH SCHOOL	16
MARPLE NEWTOWN HIGH SCHOOL	16
ABINGTON HIGH SCHOOL	15
SUN VALLEY HIGH SCHOOL	15
KENNETT HIGH SCHOOL	15
UPPER MORELAND HIGH SCHOOL	15
OWEN J ROBERTS HIGH SCHOOL	15
CARDINAL O'HARA HIGH SCHOOL	15
PARKLAND HIGH SCHOOL	15
PERKIOMEN VALLE HIGH SCHOOL	14
MNS. BONNER & ARC. PRENDERGAST	14
POTTSGROVE HIGH SCHOOL	14
ARCHBISHOP RYAN HIGH SCHOOL	14
PENNRIDGE HIGH SCHOOL	14
SPRINGFIELD HIGH SCHOOL	13
CHEROKEE HIGH SCHOOL	13

<i>School</i>	<i>#</i>
LENAPE HIGH SCHOOL	12
CUMBERLAND VALLEY HIGH SCHOOL	12
LANSDALE CATHOLIC HIGH SCHOOL	12
BOYERTOWN AREA SENIOR HIGH SCHOOL	12
FREEHOLD TOWNSHIP HIGH SCHOOL	11
MARLBORO HIGH SCHOOL	11
PLYMOUTH-WHITEMARSH HIGH SCHOOL	11
UPPER DUBLIN HIGH SCHOOL	11
HEMPFIELD HIGH SCHOOL	11
DANIEL BOON JR-SR HIGH SCHOOL	11
WALL HIGH SCHOOL	10
DALLASTOWN AREA HIGH SCHOOL	10
METHACTON HIGH SCHOOL	10
RIDLEY HIGH SCHOOL	10
ARCHBISHOP WOOD HIGH SCHOOL	10
MANHEIM TOWNSHIP HIGH SCHOOL	10
NORTHAMPTON AREA SR HIGH SCHOOL	10
CENTRAL HIGH SCHOOL	10
UNIONVILLE HIGH SCHOOL	10
DELEWARE VALLEY HIGH SCHOOL	10

Feeder Colleges: Fall 2013

Institutions Previously Attended With the Most Number of New Fall Undergraduate Transfer Students
 [Excludes students who transitioned from non-degree to degree as well as Transfers with first degree at WCU]

Name	Count	Percent of Total	Type	State
Delaware County Community College	355	37.29%	2 Year Public	PA
Montgomery County Community College	144	15.13%	2 Year Public	PA
Bucks County Community College	66	6.93%	2 Year Public	PA
Pennsylvania St Univ. University Park	53	5.57%	4 Year Public	PA
Community College of Philadelphia	48	5.04%	2 Year Public	PA
Harrisburg Area Cmty College	34	3.57%	2 Year Public	PA
Millersville University	31	3.26%	4 Year Public	PA
Kutztown University	30	3.15%	4 Year Public	PA
Northampton County Area Community College	25	2.63%	2 Year Public	PA
Temple University	23	2.42%	4 Year Public	PA
Indiana University of Pennsylvania	22	2.31%	4 Year Public	PA
Bloomsburg University	17	1.79%	4 Year Public	PA
Lehigh Carbon Community College	15	1.58%	2 Year Public	PA
Gloucester County College	11	1.16%	2 Year Public	NJ
Brookdale Community College	9	0.95%	2 Year Public	NJ
Lock Haven University	9	0.95%	4 Year Public	PA
Shippensburg University	8	0.84%	4 Year Public	PA
Neumann College	8	0.84%	4 Year Private	PA
East Stroudsburg University	7	0.74%	4 Year Public	PA
Reading Area Community College	7	0.74%	2 Year Public	PA
Widener University	7	0.74%	4 Year Private	PA
Drexel University	6	0.63%	4 Year Public	PA
West Virginia University, Morgantown	6	0.63%	4 Year Public	WV
University of Pittsburgh	6	0.63%	4 Year Public	PA
Elizabethtown College	6	0.63%	4 Year Private	PA
Total	953	100.00%		

First Time, Full Time, First Year Student Enrollment by Pennsylvania County: Fall 2013

Top 10 Counties with Most Enrollments Ranked

County	Total	Percent	Rank
Adams	11	0.48%	
Allegheny	3	0.13%	
Armstrong	0	0.00%	
Beaver	0	0.00%	
Bedford	0	0.00%	
Berks	53	2.31%	7(t)
Blair	1	0.04%	
Bradford	1	0.04%	
Bucks	217	9.47%	4
Butler	1	0.04%	
Cambria	0	0.00%	
Cameron	0	0.00%	
Carbon	7	0.31%	
Centre	3	0.13%	
Chester	338	14.75%	1
Clarion	0	0.00%	
Clearfield	0	0.00%	
Clinton	0	0.00%	
Columbia	9	0.39%	
Crawford	0	0.00%	
Cumberland	29	1.27%	
Dauphin	52	2.27%	9(t)
Delaware	244	10.65%	3

County	Total	Percent	Rank
Elk	0	0.00%	
Erie	0	0.00%	
Fayette	0	0.00%	
Franklin	10	0.44%	
Fulton	0	0.00%	
Huntingdon	2	0.09%	
Indiana	0	0.00%	
Jefferson	0	0.00%	
Juniata	2	0.09%	
Lackawanna	37	1.61%	
Lancaster	80	3.49%	6
Lawrence	1	0.04%	
Lebanon	16	0.70%	
Lehigh	52	2.27%	9(t)
Luzern	24	1.05%	
Lycoming	6	0.26%	
McKean	0	0.00%	
Mercer	1	0.04%	
Mifflin	0	0.00%	
Monroe	19	0.83%	
Montgomery	270	11.78%	2
Montour	0	0.00%	
Northampton	53	2.31%	7(t)

County	Total	Percent	Rank
Northumberland	3	0.13%	
Perry	3	0.13%	
Philadelphia	173	7.55%	5
Pike	13	0.57%	
Potter	1	0.04%	
Schuylkill	17	0.74%	
Snyder	3	0.13%	
Somerset	0	0.00%	
Sullivan	0	0.00%	
Susquehanna	2	0.09%	
Tioga	1	0.04%	
Union	1	0.04%	
Venango	0	0.00%	
Warren	1	0.04%	
Washington	1	0.04%	
Wayne	6	0.26%	
Westmoreland	0	0.00%	
Wyoming	4	0.17%	
York	72	3.14%	7(t)
Out of State	449	19.59%	
Total	2,292	100.00%	

First Time, Full Time, First Year Student Enrollment by State: Fall 2013

Top 10 States with Most Enrollments Ranked

State	Total	Percent	Rank
Alabama	0	0.00%	
Alaska	1	0.04%	10(t)
Arizona	0	0.00%	
Arkansas	0	0.00%	
California	1	0.04%	10(t)
Colorado	2	0.09%	8(t)
Connecticut	3	0.13%	7
Delaware	32	1.40%	3
District of Col.	0	0.00%	
Florida	1	0.04%	10(t)
Georgia	0	0.00%	
Hawaii	0	0.00%	
Idaho	0	0.00%	
Illinois	0	0.00%	
Indiana	0	0.00%	
Iowa	1	0.04%	10(t)
Kansas	0	0.00%	
Kentucky	0	0.00%	
Louisiana	0	0.00%	
Maine	0	0.00%	
Maryland	18	0.79%	4
Massachusetts	1	0.04%	10(t)
Michigan	0	0.00%	
Minnesota	0	0.00%	
Mississippi	0	0.00%	
Missouri	0	0.00%	
Montana	0	0.00%	

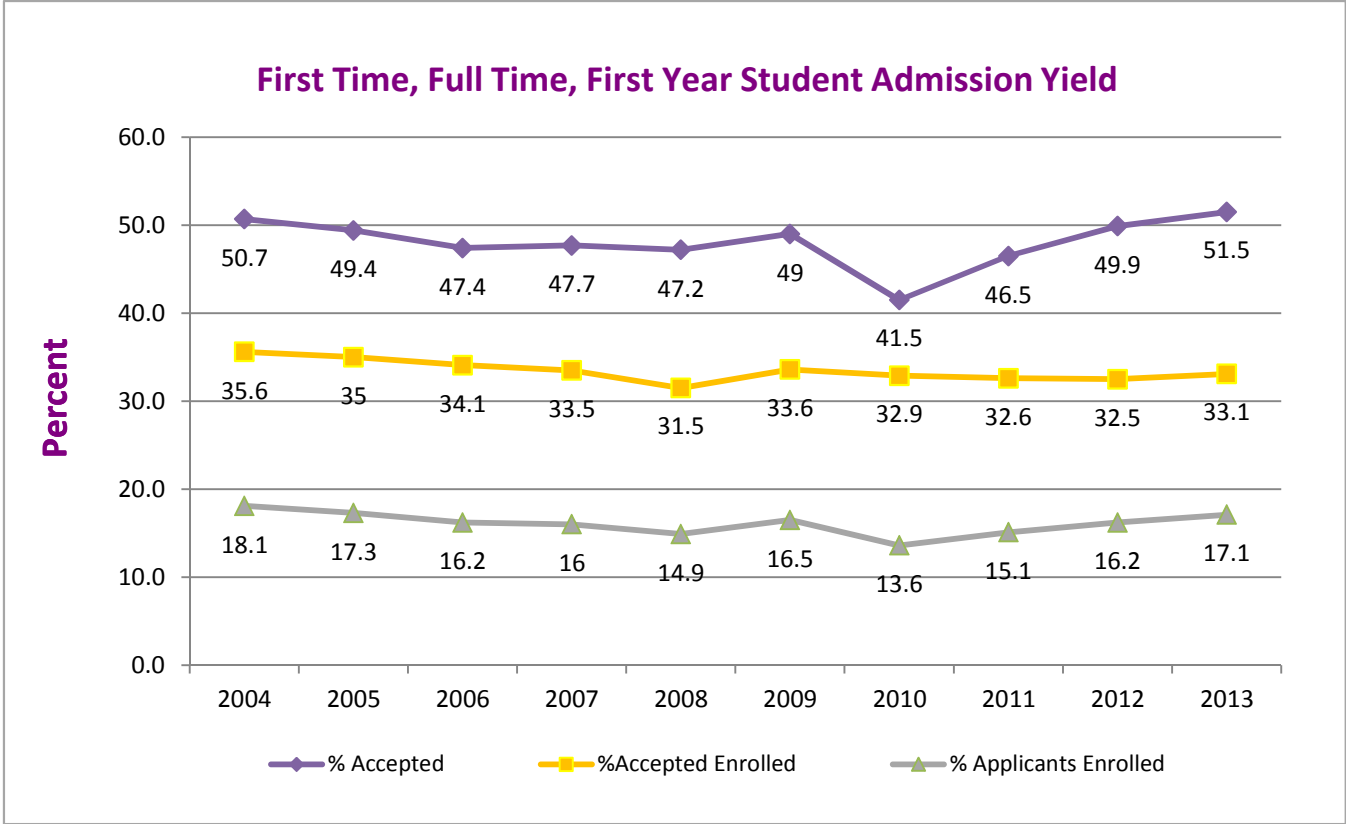
State	Total	Percent	Rank
Nebraska	0	0.00%	
Nevada	0	0.00%	
New Hampshire	0	0.00%	
New Jersey	371	16.19%	2
New Mexico	0	0.00%	
New York	10	0.44%	5
North Carolina	0	0.00%	
North Dakota	0	0.00%	
Ohio	0	0.00%	
Oklahoma	0	0.00%	
Oregon	0	0.00%	
Pennsylvania	1,843	80.41%	1
Rhode Island	0	0.00%	
South Carolina	1	0.04%	10(t)
South Dakota	0	0.00%	
Tennessee	0	0.00%	
Texas	1	0.04%	10(t)
Utah	0	0.00%	
Vermont	0	0.00%	
Virginia	4	0.17%	6
Washington	0	0.00%	
West Virginia	0	0.00%	
Wisconsin	0	0.00%	
Wyoming	0	0.00%	
Armed Forces	0	0.00%	
Missing	2	0.09%	8(t)
Total	2,292	100.00%	

Admission Yield Statistics: Fall 2013

First-Time, Full Time, First Year Student Admission Yield

Year	# of Applicants	# Accepted	% Accepted	# Full-Time Enrolled	% Accepted Full-time Enrolled	% of Applicants Enrolled
2004	10,401	5,273	50.7	1,879	35.6	18.1
2005	11,013	5,438	49.4	1,901	35	17.3
2006	11,669	5,530	47.4	1,885	34.1	16.2
2007	12,237	5,834	47.7	1,957	33.5	16
2008	13,353	6,317	47.2	1,993	31.5	14.9
2009	13,615	6,667	49	2,241	33.6	16.5
2010	15,123	6,268	41.5	2,062	32.9	13.6
2011	15,080	7,013	46.5	2,283	32.6	15.1
2012	14,356	7,161	49.9	2,326	32.5	16.2
2013*	13,438	6,922	51.5	2,292	33.1	17.1
5-YR Change	0.6%	9.6%	9.1%	15.0%	5.1%	14.8%
1-YR Change	-6.4%	-3.3%	3.2%	-1.5%	1.9%	5.6%

*Starting Fall 2013, number of applicants includes completed applications only.

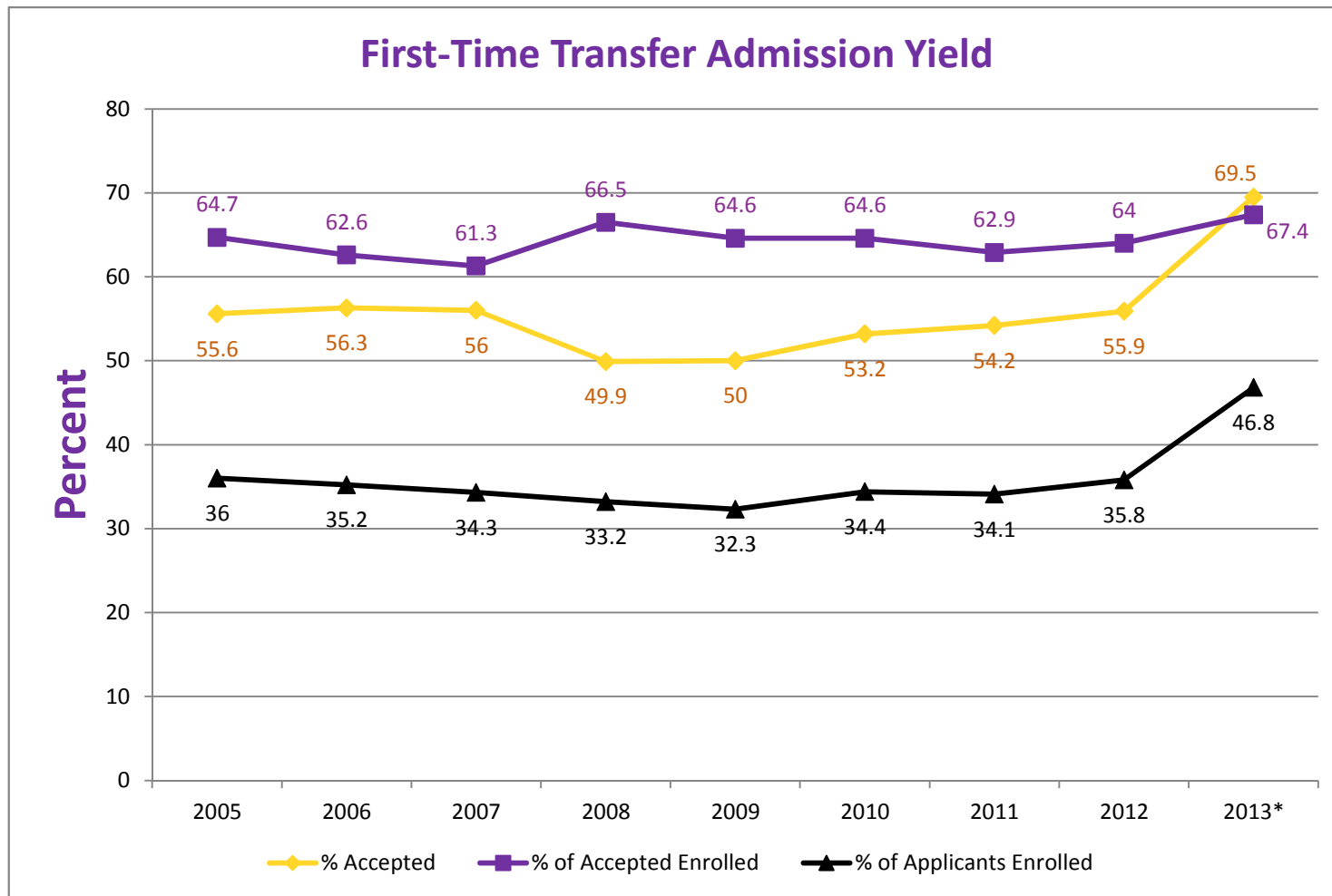


*Starting Fall 2013, number of applicants includes completed applications only.

First-Time Transfer Admission Yield : Fall 2013

Year	# of Applicants	# Accepted	% Accepted	# Enrolled	% of Accepted Enrolled	% of Applicants Enrolled
2005	2,673	1,487	55.6	962	64.7	36
2006	2,690	1,514	56.3	948	62.6	35.2
2007	2,839	1,589	56	974	61.3	34.3
2008	3,224	1,609	49.9	1070	66.5	33.2
2009	3,639	1,821	50	1,176	64.6	32.3
2010	3,607	1,920	53.2	1,241	64.6	34.4
2011	3,742	2,029	54.2	1,276	62.9	34.1
2012	3,678	2,057	55.9	1,316	64	35.8
2013*	2,883	2,003	69.5	1,350	67.4	46.8
5-YR Change	-10.6%	24.5%	39.3%	26.2%	1.4%	41.0%
1-YR Change	-21.6%	-2.6%	24.3%	2.6%	5.3%	30.7%

*Starting Fall 2013, number of applicants includes completed applications only.



*Starting Fall 2013, number of applicants includes completed applications only.



ENROLLMENT

Head Count Enrollment by Gender and Ethnicity: Fall 2013

Gender	Undergraduate		Graduate		Total*
	Full-Time	Part-time	Full-Time	Part-time	
Male	4,969	574	231	436	6,210
Female	7,515	655	556	911	9,637
Total	12,484	1,229	787	1,347	15,847

Ethnicity	Undergraduate		Graduate		Total*
	Full-Time	Part-time	Full-Time	Part-time	
African American	1,141	107	109	147	1,504
Native American	11	4	4	1	20
Asian	253	39	11	46	349
Caucasian	10,139	999	579	1,063	12,780
Hawaiian/Pacific Islander	6	2	0	1	9
Hispanic	583	53	26	38	700
Non-Resident Alien	37	4	42	21	104
Multiracial	306	16	15	13	350
Not Supplied	8	5	1	17	31
Total	12,484	1,229	787	1,347	15,847

*These headcounts are unduplicated counts within student's career level and do not reflect IPEDS unduplicated count.

Head Count Enrollment by Degree Status and College: Fall 2013

Degree Status	Undergraduate		Graduate		Total*
	Full-Time	Part-time	Full-Time	Part-time	
Degree Seeking	12,453	1,004	737	1,016	15,210
Non-degree Seeking	31	225	50	331	637
Total	12,484	1,229	787	1,347	15,847

College	Undergraduate		Graduate		Total*
	Full-Time	Part-time	Full-Time	Part-time	
Arts and Sciences	4,043	363	178	300	4,884
Business and Public Affairs	2,478	225	223	282	3,208
Education	1,172	27	156	412	1,767
Health Sciences	2,181	300	202	132	2,815
Visual and Performing Arts	618	42	22	47	729
Undeclared	1,992	272	6	174	2,444
Total	37,452	3,687	2,361	4,041	47,541

*These headcounts are unduplicated counts within student's career level and do not reflect IPEDS unduplicated count.

Enrollment by State at the Time of Admission: Fall 2010 to Fall 2013

STATE	Fall 2010			Fall 2011			Fall 2012			Fall 2013			Rank
	UG	G	Total	UG	G	Total	UG	G	Total	UG	G	Total	
Alabama					1	1		2	2				
Alaska				1		1	1	1	2	1		1	
Arizona		1	1		1	1							
Arkansas	1		1	1	1	2	1		1		1	1	
California	1	3	4	2	2	4	7	1	8	14	1	15	8(t)
Colorado	1		1	1		1	1		1	2	1	3	
Connecticut	13	2	15	14	2	16	11	2	13	15		15	8(t)
Delaware	153	57	210	159	48	207	158	58	216	170	51	221	3
District of Col.	4	1	5	3	1	4	2		2	1	1	2	
Florida	4	2	6	5	1	6	9	2	11	7	3	10	10
Georgia	1	2	3		1	1		1	1	3	1	4	
Hawaii	1		1	1		1				1	1	2	
Idaho													
Illinois	1	1	2	3	2	5	1	1	1				
Indiana	2	1	3	2		2	2		2	1	1	2	
Iowa				1		1				2	1	3	
Kansas													
Kentucky					3	3		3	3				
Louisiana					1	1		1	1		1	1	
Maine	1	1	2	1	1	2	2		2	2		2	
Maryland	77	14	91	78	18	96	71	13	84	74	9	83	5
Massachusetts	8	1	9	7	3	10	7	3	10	5	4	9	
Michigan		2	2		2	2	2	2	4	2	3	5	
Minnesota		1	1		1	1	1	1	2				
Mississippi					1	1							
Missouri								1	1		1	1	
Montana													
Nebraska													
Nevada													
New Hampshire	1	1	2	2		2	2		2	2		2	

Enrollment by State at the Time of Admission: Fall 2010 to Fall 2013 (continued)

STATE	Fall 2010			Fall 2011			Fall 2012			Fall 2013			Rank
	UG	G	Total	UG	G	Total	UG	G	Total	UG	G	Total	
New Jersey	1,096	60	1,156	1,151	63	1,214	1,243	57	1,300	1,389	67	1,456	2
New Mexico					2	2		2	2				
New York	51	12	63	47	14	61	48	13	61	56	11	67	6
North Carolina	3	1	4	3		3	3		3	2	1	3	
North Dakota													
Ohio	4		4	4	2	6	4	2	6	4	4	8	
Oklahoma		1	1		1	1							
Oregon										1		1	
Pennsylvania	10,777	2,058	12,835	11,271	2,045	13,316	11,645	1,889	13,534	11,880	1,879	13,759	1
Rhode Island	2		2					1	1		1	1	
South Carolina		1	1		1	1	1	1	2	2	1	3	
South Dakota													
Tennessee										1		1	
Texas	3	1	4	6	1	7	3		3	4		4	
Utah													
Vermont							1		1				
Virginia	15	5	20	15	5	20	14	5	19	17	5	22	7
Virgin Islands													
Washington				2		2	2		2	2		2	
West Virginia	2		2	3		3	3		3	1	1	2	
Wisconsin	1		1	1		1					1	1	
Wyoming													
Armed Forces	1		1	2		2	2		2	2		2	
International	10	29	39	48	42	90	53	52	105	50	83	133	4
TOTAL	12,234	2,258	14,492	12,834	2,266	15,100	13,301	2,114	15,415	13,713	2,134	15,847	
In-State	10,777	2,058	12,835	11,271	2,045	13,316	11,645	1,889	13,534	11,880	1,879	13,759	
Out-of-State	1,457	200	1,657	1,563	221	1,784	1,656	225	1,881	1,833	255	2,088	
Out-of-State %	11.91%	8.86%	11.43%	12.18%	9.75%	11.81%	12.45%	10.64%	12.20%	13.37%	11.95%	13.18%	

Enrollment by County for Pennsylvania Residents: Fall 2013

Top 10 Counties* With Most Enrollments Ranked

County	Total	Percent	Rank
Adams	58	0.37%	
Allegheny	32	0.20%	
Armstrong	1	0.01%	
Beaver	6	0.04%	
Bedford	3	0.02%	
Berks	480	3.03%	7
Blair	9	0.06%	
Bradford	9	0.06%	
Bucks	1,292	8.15%	5
Butler	3	0.02%	
Cambria	2	0.01%	
Carbon	40	0.25%	
Centre	13	0.08%	
Chester	3,638	22.96%	1
Clarion	1	0.01%	
Clearfield	5	0.03%	
Clinton	4	0.03%	
Columbia	18	0.11%	
Crawford	3	0.02%	
Cumberland	184	1.16%	
Dauphin	210	1.33%	
Delaware	2,422	15.28%	2
Elk	0	0.00%	

County	Total	Percent	Rank
Erie	3	0.02%	
Fayette	2	0.01%	
Franklin	37	0.23%	
Fulton	0	0.00%	
Huntingdon	5	0.03%	
Indiana	1	0.01%	
Jefferson	0	0.00%	
Juniata	3	0.02%	
Lackawanna	182	1.15%	
Lancaster	440	2.78%	8
Lawrence	1	0.01%	
Lebanon	66	0.42%	
Lehigh	326	2.06%	10
Luzerne	112	0.71%	
Lycoming	27	0.17%	
McKean	2	0.01%	
Mercer	3	0.02%	
Mifflin	3	0.02%	
Monroe	106	0.67%	
Montgomery	2,065	13.03%	4
Montour	4	0.03%	
Northampton	275	1.74%	
Northumberland	15	0.09%	

County	Total	Percent	Rank
Perry	17	0.11%	
Philadelphia	1,075	6.78%	6
Pike	43	0.27%	
Potter	2	0.01%	
Schuylkill	75	0.47%	
Snyder	16	0.10%	
Somerset	1	0.01%	
Sullivan	0	0.00%	
Susquehanna	18	0.11%	
Tioga	1	0.01%	
Union	10	0.06%	
Venango	1	0.01%	
Warren	2	0.01%	
Washington	3	0.02%	
Wayne	31	0.20%	
Westmoreland	11	0.07%	
Wyoming	12	0.08%	
York	330	2.08%	9
Out of State	1,955	12.34%	
International	133	0.84%	
Total	15,847	100%	

*County at the time of admission.

Head Count Enrollment: Fall 2009 to 2013: Five-Year Enrollment by Ethnicity and Gender

Undergraduate Students

Ethnicity	2009		2010		2011		2012		2013	
	Male	Female	Male	Female	Male	Female	Male	Female	Male	Female
Caucasian	4,151	6,011	4,228	6,032	4,412	6,216	4,480	6,434	4,492	6,646
African American	371	674	390	696	419	721	415	730	494	754
Hispanic	121	253	162	273	210	339	245	369	267	369
Asian	101	134	98	148	113	126	121	132	124	168
Hawaiian/Pacific Islander			3	1	2	1	2	5	3	5
Native American	13	23	13	21	9	17	6	13	5	10
NRA-International	9	13	11	23	19	29	19	29	17	24
Multiracial			39	49	78	86	100	126	134	188
Not Supplied	23	23	25	22	20	17	37	38	7	6
Total	4,789	7,131	4,969	7,265	5,282	7,552	5,425	7,876	5,543	8,170

Graduate Students

Ethnicity	2009		2010		2011		2012		2013	
	Male	Female	Male	Female	Male	Female	Male	Female	Male	Female
Caucasian	513	1,431	523	1,350	532	1,308	485	1,149	509	1,133
African American	57	112	58	136	64	167	77	159	79	177
Hispanic	6	31	13	38	11	42	18	39	17	47
Asian	22	52	22	35	24	34	24	33	18	39
Hawaiian/Pacific Islander			0	1	0	1	0	1	1	0
Native American	1	4	2	5	2	1	0	4	1	4
NRA-International	24	30	24	36	19	28	14	39	25	38
Multiracial	1		2	6	5	16	6	14	10	18
Not Supplied	2	5	3	4	3	9	22	30	7	11
Total	626	1,665	647	1,611	660	1,606	646	1,468	667	1,467

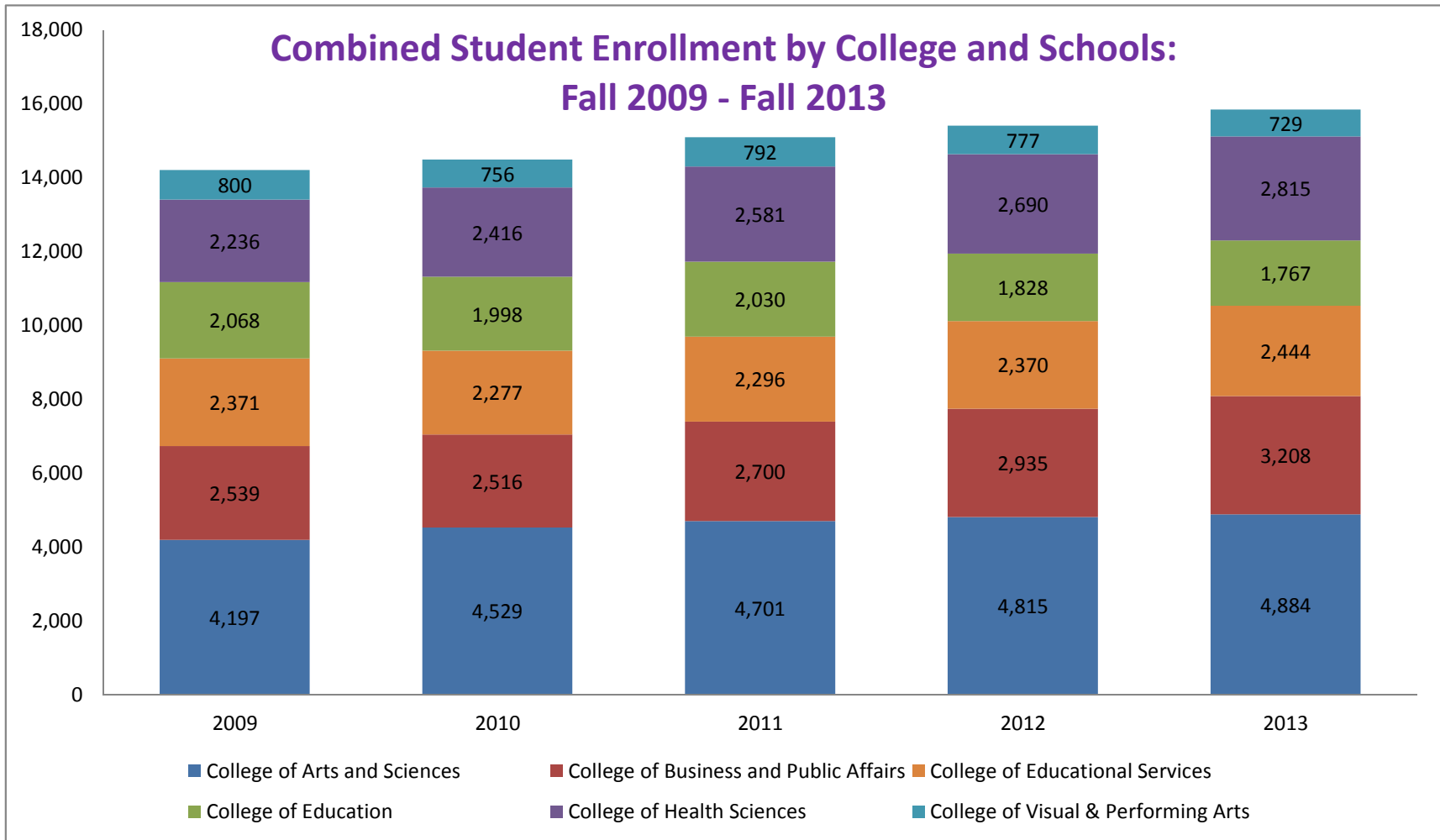
Head Count Enrollment: Fall 2009 to 2013 Enrollment by College

Undergraduate Students

College	2009	2010	2011	2012	2013
College of Arts and Sciences	3,637	3,964	4,161	4,334	4,406
College of Business and Public Affairs	2,245	2,196	2,327	2,551	2,703
College of Education	1,330	1,295	1,310	1,233	1,199
College of Health Sciences	1,931	2,069	2,243	2,348	2,481
College of Visual & Performing Arts	724	685	728	706	660
Non-Degree/Undeclared	2,053	2,025	2,065	2,169	2,264
Total	11,919	12,234	12,834	13,301	13,713

Graduate Students

College	2009	2010	2011	2012	2013
College of Arts and Sciences	560	565	540	481	478
College of Business and Public Affairs	294	320	373	424	505
College of Education	738	703	720	595	568
College of Health Sciences	305	347	338	342	334
College of Visual & Performing Arts	76	71	64	71	69
Non-Degree/Undeclared	318	252	231	201	180
Total	2,291	2,258	2,266	2,114	2,134

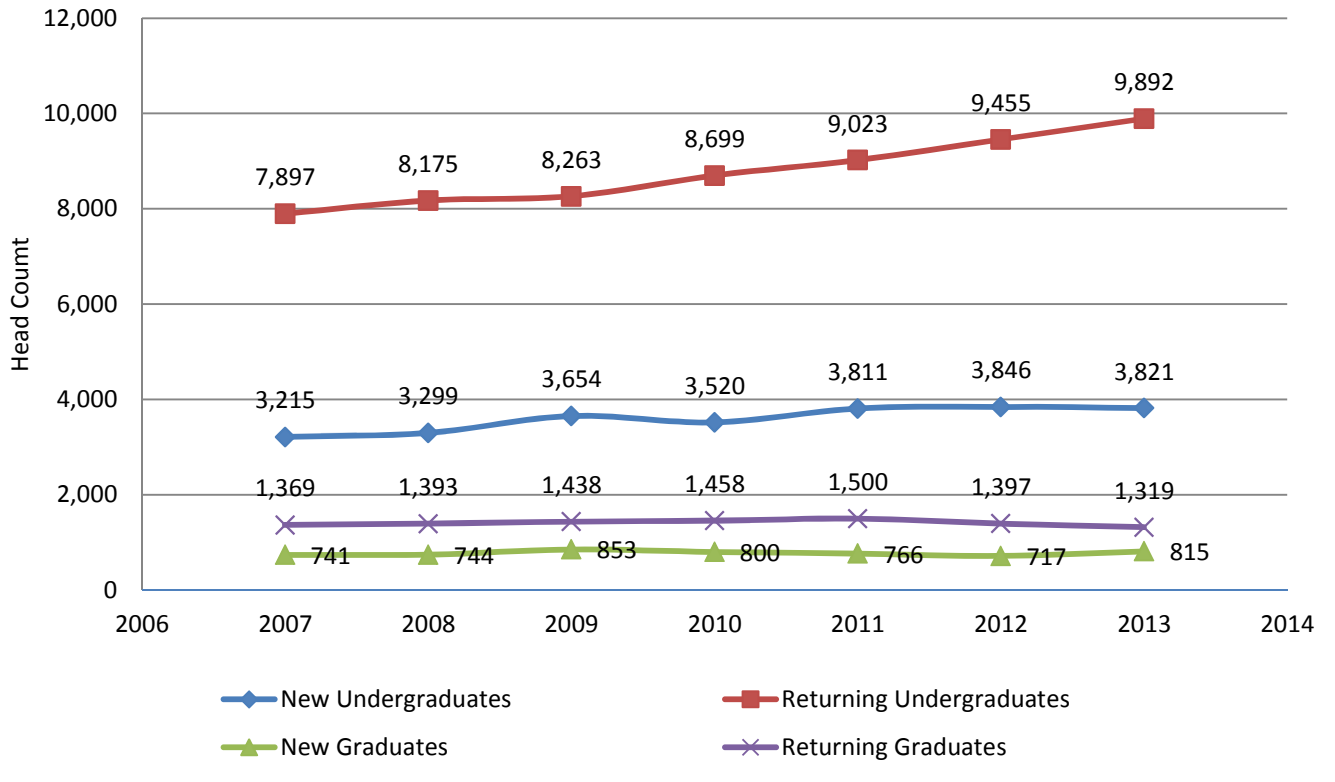


Note: Non-degree and Pre-major students are included in EDS (Education Services).

Head Count Enrollment by Student Level: Fall 2008 to Fall 2013

Fall Semester	2008	2009	2010	2011	2012	2013	One Year Difference
Undergraduate							
New First Year Degree Seeking	2,002	2,248	2,067	2,292	2,334	2,298	-36
New Transfer Degree Seeking	1,070	1,179	1,241	1,276	1,316	1,350	34
New Readmits Degree Seeking	92	87	87	104	98	76	-22
New Undergraduate Non Degree	144	143	140	139	98	97	-1
Returning Undergraduate Degree Seeking First Year	666	669	710	565	604	657	53
Returning Undergraduate Degree Seeking Sophomore	2,148	2,110	2,358	2,414	2,432	2,585	153
Returning Undergraduate Degree Seeking Junior	2,281	2,373	2,366	2,670	2,746	2,912	166
Returning Undergraduate Degree Seeking Senior	2,869	2,894	3,046	3,200	3,525	3,579	54
Returning Undergraduate Non Degree	212	217	219	174	148	159	11
Graduate							
New Masters	475	549	566	557	533	621	88
New Graduate Non Degree	269	304	234	209	184	194	10
Returning Masters	1,104	1,143	1,154	1,189	1,163	1,132	-31
Returning Graduate Non Degree	289	295	304	311	234	187	-47
Total Enrollment	13,223	14,211	14,492	15,100	15,415	15,847	432

Head Count Enrollment by Student Level Fall 2007 to Fall 2013



Credit Hours and Student FTE Enrollment FY 2008-09 to FY 2012-13

Student FTE Enrollment: FY 2008-09 to FY 2012-13

FTE Division	2008-09	2009-10	2010-11	2011-12	2012-13	One Year Difference
Lower Division Full-Time Equivalent Students	7,057.5	7,499.0	7,697.1	7,830.1	8,070.5	240.4
Upper Division Full-Time Equivalent Students	4,284.8	4,472.0	4,512.2	4,762.4	5,066.5	304.1
Graduate Division Full-Time Equivalent Students	1,427.1	1,521.0	1,538.1	1,466.0	1,405.7	-60.3
Total Full-Time Equivalent Students	12,769.4	13,492.0	13,747.4	14,058.5	14,542.7	484.2

Credit Hours: FY 2008-09 to FY 2012-13

College	2008-09	2009-10	2010-11	2011-12	2012-13	One Year Difference
College of Arts & Sciences	178,910.0	190,846.0	201,594.0	214,760.0	223,408.0	8,648.0
College of Business and Public Affairs	59,975.0	63,522.0	62,636.0	66,512.0	72,822.0	6,310.0
College of Education	47,109.0	48,049.0	45,471.0	42,496.0	40,114.0	-2,382.0
College of Health Sciences	50,811.0	55,532.0	58,188.0	59,061.5	60,464.5	1,403.0
College of Visual and Performing Arts	29,066.0	28,571.5	26,892.0	27,566.0	28,115.5	549.5
Educational Services	1,723.0	1,926.0	1,911.0	2,562.0	2,923.5	361.5
Total University Credit Hours	367,594.0	388,446.5	396,692.0	412,957.5	427,847.5	14,890.0

Credit Hours by College and Course division For FY 2012-13

College	Lower	Upper	Total Undergraduate	Graduate	Total	% Graduate
College of Arts & Sciences	161,436.0	54,114.0	215,550.0	7,858.0	223,408.0	3.5%
College of Business and Public Affairs	27,525.0	37,078.0	64,603.0	8,219.0	72,822.0	11.3%
College of Education	7,951.0	22,874.0	30,825.0	9,289.0	40,114.0	23.2%
College of Health Sciences	23,934.5	29,310.0	53,244.5	7,220.0	60,464.5	11.9%
College of Visual and Performing Arts	20,107.5	6,857.0	26,964.5	1,151.0	28,115.5	4.1%
Educational Services	1,162.0	1,761.0	2,923.0	0.0	2,923.5	0.0%
Total University Credit Hours	242,116.0	151,994.0	394,110.0	33,737.0	427,847.5	7.9%

A large purple graphic element consisting of a vertical bar on the right side and two horizontal bars extending to the left from the top and bottom of the vertical bar, framing the title.

RETENTION AND GRADUATION

Retention and Graduation Rates for First-time, Full-Time, First-Year, Degree-Seeking Student Cohorts --University Summary

Fall Cohort	N 1st Fall	2nd Fall		3rd Fall		4th Fall		5th Fall				6th Fall				7th Fall			
		Cohort Retained		Cohort Retained		Cohort Retained		Cumulative Graduated within 4 yrs*		Cohort Retained		Cumulative Graduated within 5 yrs		Cohort Retained		Cumulative Graduated within 6 yrs		Cohort Retained	
		n	% 1F	n	% 1F	n	% 1F	n	% 1F	n	% 1F	n	% 1F	n	% 1F	n	% 1F	n	% 1F
1996	1454	1170	80.5	1003	69	945	65	376	25.9	527	36.2	771	53	103	7.1	833	57.3	35	2.4
1997	1577	1298	82.4	1116	70.8	1055	66.9	409	26	605	38.4	861	54.6	109	6.9	932	59.1	30	1.9
1998	1629	1353	83.2	1173	72.1	1070	65.8	474	29.1	577	35.5	898	55.2	108	6.6	964	59.3	34	2.1
1999	1715	1413	82.6	1219	71.3	1150	67.3	444	26	653	38.2	943	55.1	91	5.3	1023	59.8	24	1.4
2000	1721	1412	82.3	1275	74.3	1166	68	536	31.3	569	33.2	961	56	103	6	1037	60.5	35	2
2001	1631	1384	85.2	1222	75.2	1149	70.7	571	35.1	520	32	996	61.3	79	4.9	1050	64.6	29	1.8
2002	1768	1461	82.7	1290	73	1236	70	642	36.4	536	30.4	1049	59.4	97	5.5	1123	63.6	25	1.4
2003	1726	1466	85.1	1298	75.3	1207	70.1	685	39.8	481	27.9	1053	61.1	89	5.2	1121	65.1	21	1.2
2004	1874	1570	84	1361	72.8	1306	69.8	734	39.3	535	28.6	1155	61.8	95	5.1	1223	65.4	29	1.6
2005	1897	1607	84.8	1442	76.1	1378	72.8	814	42.9	528	27.9	1239	65.3	81	4.3	1299	68.4	26	1.4
2006	1885	1616	85.8	1467	77.9	1401	74.4	803	42.6	553	29.4	1233	65.5	93	4.9	1297	68.9	26	1.4
2007	1957	1650	84.4	1511	77.3	1428	73.0	857	43.7	536	27.4	1264	64.7	96	4.9	1342	68.6	27	1.4
2008	1993	1683	84.5	1517	76.2	1453	72.9	871	43.7	525	26.4	1262	63.4	108	5.4				
2009	2241	1909	85.2	1747	78	1693	75.5	943	42.1	670	29.9								
2010	2062	1775	86.1	1638	79.4	1568	76												
2011	2283	1950	85.4	1822	79.8														
2012	2326	2032	87.4																
2013	2292																		

Note: Data is from Fall enrollment at census dates and completions files as reported to IPEDS. Includes degree sweeps and IPEDS exclusions through 10/2013

Second-Year Retention Rates for First-Time, Full-Time, Degree-Seeking Freshmen by Race/Ethnicity

Fall Cohort	African American			Asian			Latino			Native American			Caucasian		
	N 1 st Fall	N 2 nd Fall	% Retained	N 1 st Fall	N 2 nd Fall	% Retained	N 1 st Fall	N 2 nd Fall	% Retained	N 1 st Fall	N 2 nd Fall	% Retained	N 1 st Fall	N 2 nd Fall	% Retained
2006	174	151	87.3	43	36	85.7	66	46	69.2	5	4	80	1597	1379	86.3
2007	190	151	79.5	39	35	89.7	62	44	71	9	9	100	1656	1411	85.3
2008	201	168	83.6	44	37	84.1	90	77	85.6	5	4	80	1648	1396	84.8
2009	178	152	85.4	39	34	87.2	85	64	75.3	6	6	100	1908	1631	85.5
2010	233	171	83.8	41	36	87.8	115	88	76.5	2	1	50	1644	1424	86.6
2011	191	154	80.6	30	26	86.7	162	132	81.5	1	1	100	1839	1588	86.4
2012	211	181	85.8	48	43	89.6	136	114	83.8	0	0	0	1881	1652	87.8
2013	231			48			122			1			1811		

Second-Year Retention Rates for First-Time, Full-Time, Degree-Seeking Freshmen by Gender

Fall Cohort	Male			Female		
	N 1 st Fall	N 2 nd Fall	% Retained	N 1 st Fall	N 2 nd Fall	% Retained
2006	683	558	81.7	1200	1058	88.2
2007	741	612	82.7	1215	1038	85.4
2008	762	635	83.4	1231	1048	85.1
2009	888	745	83.9	1353	1164	86
2010	767	643	83.8	1295	1132	87.4
2011	904	754	83.4	1379	1196	86.7
2012	869	764	87.9	1457	1268	87
2013	810			1482		

Four Year Graduation Rates for First-Time, Full-Time Freshmen by Ethnicity

Fall Cohort	African American			Asian			Latino			Native American			Caucasian		
	N 1st Fall	N Grad	% Grad	N 1st Fall	N Grad	% Grad	N 1st Fall	N Grad	% Grad	N 1st Fall	N Grad	% Grad	N 1st Fall	N Grad	% Grad
2004	166	39	23.8	35	13	37.1	58	14	24.1	4	1	25	1609	667	41.5
2005	171	51	30.2	38	13	34.2	66	26	39.4	3	1	33.3	1615	723	44.8
2006	171	43	25.3	43	14	34.1	66	18	27.3	5	1	20	1590	727	45.7
2007	185	45	24.3	39	18	46.2	58	14	24.1	9	4	44.4	1628	776	47.7
2008	173	38	33	41	20	48.8	79	33	41.8	4	2	50	1502	773	51.5
2009	153	4	2.6	29	1	3.4	71	5	7	5	0	0	1170	133	11.4

Six Year Graduation Rates for First-Time, Full-Time Freshmen by Ethnicity

Fall Cohort	African American			Asian			Latino			Native American			Caucasian		
	N 1st Fall	N Grad	% Grad	N 1st Fall	N Grad	% Grad	N 1st Fall	N Grad	% Grad	N 1st Fall	N Grad	% Grad	N 1st Fall	N Grad	% Grad
2002	142	76	53.5	37	22	59.5	42	21	50	8	4	50	1534	999	65.2
2003	182	98	53.8	25	14	56	58	34	58.6	1	0	0	1448	970	67.1
2004	166	87	53	35	20	57.1	58	35	60.3	4	1	25	1606	1080	67.3
2005	171	98	58	38	25	65.8	66	40	60.6	3	1	33.3	1615	1135	70.3
2006	171	97	57.1	43	24	58.5	66	33	50	5	3	60	1590	1135	71.4
2007	185	92	49.7	39	28	71.8	58	29	50	9	7	77.8	1628	1149	70.7

Four Year Graduation Rates for First-Time, Full-Time Freshmen by Gender

Fall Cohort	Male			Female		
	N 1st Fall	4 Yr Grad		N 1st Fall	4 Yr Grad	
		#	%		#	%
2005	678	216	31.9	1219	597	49.1
2006	683	191	28	1202	602	50.1
2007	740	235	31.8	1215	622	51.2
2008	762	231	30.4	1231	640	52
2009	880	275	31	1353	668	49.4

Six Year Graduation Rates for First-Time, Full-Time Freshmen by Gender

Fall Cohort	Male			Female		
	N 1st Fall	6Yr Grad		N 1st Fall	6 Yr Grad	
		#	%		#	%
2002	662	362	54.7	1106	761	68.9
2003	606	355	58.8	1120	766	68.5
2004	658	379	57.8	1216	840	69.2
2005	678	419	61.7	1219	880	72.2
2006	683	401	58.7	1202	896	74.7
2007	740	452	61.1	1215	890	73.3

A thick purple horizontal bar that is partially obscured by a white box containing text. The bar extends from the right edge of the page towards the left, ending at the right side of the white box.

ACADEMIC DEGREE AND CERTIFICATE PROGRAMS

Undergraduate Degree and Certificate Programs - Fall 2013

College of Arts and sciences

BA American Studies
BA Anthropology
BA Biology
BA Communication Studies
BA English: Literature
BA English: Writings
BA French
BA German
BA History
BA Latin
BA Liberal Studies: Arts and Sciences
BA Liberal Studies: Career Preparation
BA Literature
BA Mathematics
BA Philosophy
BA Philosophy:Religious Studies
BA Psychology
BA Russian
BA Sociology
BA Spanish
BA Women's and Gender Studies
BS Biochemistry
BS Biology
BS Biology: Cell and Molecular
BS Biology: Ecology and Conservation
BS Biology: Marine Science
BS Biology: Medical Technology
BS Biology: Microbiology
BS Chemistry
BS Chemistry-Biology
BS Computer Science
BS Forensic & Toxicological Chemistry
BS Geoscience - Geology
BS Geoscience : Earth Systems
BS Liberal Studies: Professional Studies Track
BS Liberal Studies: Science-Math
BS Mathematics: Actuarial Science

College of Arts and Sciences (cont.)

BS Mathematics: Computational Mathematics
BS Mathematics: Industrial Mathematics
BS Mathematics: Mathematical Finance
BS Mathematics: Statistics
BS Pharmaceutical Product Development
BS Physics
BS Physics-Engineering
BSED Biology
BSED Chemistry
BSED Earth-Space Science
BSED Earth-Space Science : Geology
BSED English: Literature
BSED English: Writings
BSED Mathematics
BSED Physics
Certificate Computer Security
Certificate TESL
TC Biology
TC Chemistry
TC Communications
TC Earth-Space Science
TC English
TC French
TC General Science
TC German
TC Latin
TC Mathematics
TC Physics
TC Russian
TC Social Studies - History
TC Spanish

College of Business and Public affairs

BA Geography
BA Geography: Environmental
BA Geography:Geographic Information Systems
BA Geography:Urban/Regional Planning
BA Political Science
BA Political Science: International Relations
BA Political Science:Applied Public Policy
BS Accounting
BS Business Management
BS Criminal Justice
BS Criminal Justice (Philadelphia)
BS Economics
BS Finance
BS Marketing
BS Pre-Business Accounting
BS Pre-Business: Eco-Finance
BS Pre-Business: Management
BS Pre-Business: Marketing
BSW Social Work
BSW Social Work (Philadelphia)

College of Education

BSED Early Childhood Education
BSED Early Grades Prep, PK-4 Education
BSED Elementary Education
BSED Middle Grades Prep, 4-8 Education
BSED Special Education
BSED Special Education: 7-12
BSED Special Education: PK-8
TC Early Childhood Education
TC Elementary Education
TC Post-Baccalaureate Grades 4-8
TC Post-Baccalaureate PK-4
Certificate Education for Sustainability

Undergraduate Degree and Certificate Programs - Fall 2013 (continued)

College of Health

BA Communicative Disorders
 BS Athletic Training
 BS Exercise Science
 BS Exercise Science: Pre-Chiropractic
 BS Exercise Science: Pre-Occupational Therapy
 BS Exercise Science: Pre-Physical Therapy
 BS Health and Physical Education
 BS Health Science: General
 BS Health Science: Respiratory Care
 BS Nutrition and Dietetics
 BS Public Health: Environmental
 BS Public Health: Health Promotion
 BSN Nursing
 BSN Nursing: 2nd Degree
 BSN Nursing: RN
 TC Health & Physical Educ
 TC Speech Correction
 Pre-Grad Program Certificate
 Certificate Athletic Training

College of Visual and Performing Arts

BA Studio Arts
 BA Theatre
 BA Theatre and Dance: Dance
 BA Theatre: Design, Technology, Management
 BA Theatre: Musical Theatre
 BA Theatre: Performance
 BFA Studio Arts
 BM Music Education: Instrument
 BM Music Education: Keyboard
 BM Music Education: Voice
 BM Music: Elective Studies
 BM Music: History
 BM Music: Performance - Instrument
 BM Music: Performance - Jazz
 BM Music: Performance - Keyboard
 BM Music: Performance - Voice
 BM Music: Theory & Composition
 TC Music Education

Educational Services

Certificate Leadership and Civic Engagement

Note : TC is recommended for Teacher Certification.

Graduate Degree and Certificate Programs - Fall 2013

College of Arts and Sciences

MA Communication Studies
 MA English
 MA English - Non-Thesis Option
 MA French
 MA Geoscience
 MA History
 MA Holocaust and Genocide Studies
 MA Mathematics
 MA Philosophy: Applied Ethics
 MA Philosophy: General
 MA Psychology - General
 MA Psychology - Clinical
 MA Psychology - Industrial/Organizational
 MA Spanish
 MA TESL
 MED French
 MED German
 MED History
 MED Spanish
 MS Applied Statistics
 MS Biology
 MS Biology : Thesis
 MS Computer Science
 MSA Leadership for Women
 MSA Long-Term Care
 MPA Leadership for Women
 MPA Long-Term Care
 TC Biology
 TC Chemistry
 TC Earth-Space Science
 TC English
 TC French
 TC General Science

College of Arts and Sciences

TC German
 TC Latin
 TC Mathematics
 TC Physics
 Certificate Applied Statistics
 Certificate Gerontology
 Certificate Holocaust and Genocide Studies
 Certificate Business Ethics
 Certificate Computer Security
 Certificate Healthcare Ethics
 Certificate Information Systems
 Certificate Leadership for Women
 Certificate TESL
 Graduate Certificate Web Technology
 Letter of Completion: Clinical Mental Health
 TC Social Studies - History
 TC Spanish

College of Business and Public Affairs

MA Geography
 MBA Economics-Finance
 MBA Executive
 MBA General
 MBA Management
 MBA Technology - Electronic Commerce
 MPA Human Resource Management
 MPA Individualized Program
 MPA Nonprofit Administration
 MPA Public Administration
 MPA Regional Planning
 MPA Training and Development
 MS Criminal Justice
 MS Criminal Justice (Philadelphia)
 MSA Human Resource Management

College of Business and Public Affairs

MSA Public Administration
 MSA Training and Development
 MSW Social Work
 MSW Social Work (Philadelphia)
 Certificate Business
 Certificate Human Resource Management
 Certificate Administration
 Certificate Geographic Information Systems
 Certificate Non Profit Administration
 Certificate Urban and Regional Planning

College of Education

MED Applied Studies in Teaching and Learning
 MED Applied Studies in Teaching and Learning (Philadelphia)
 MED Counseling - Elementary
 MED Counseling - Secondary
 MED Early Childhood Education
 MED Reading
 MED Reading (Philadelphia)
 MED Secondary Education
 MED Special Education
 MED Special Education (online)
 MED Special Education (Philadelphia)
 MS - Higher Education Counseling/Student Affairs
 TC Counseling
 TC Early Childhood Education
 TC Early Grades Preparation
 TC Elementary Education
 TC Middle Grades Preparation
 TC Reading
 TC Reading (Philadelphia)
 TC Secondary Education
 TC Special Education: 7-12
 TC Special Education 7-12 (Philadelphia)

Graduate Degree and Certificate Programs - Fall 2013 (continued)

College of Education

TC Special Education 7-12 (Online)
 TC Special Education: K-12
 TC Special Education: PK-8
 TC Special Education: PK-8 (Philadelphia)
 TC Special Education: PK-8 (Online)
 Certificate Autism
 Certificate Education for Sustainability
 Certificate Educational Technology
 Certificate Entrepreneurial Education
 Certificate Literacy Coaching
 Certificate Universal Design for Learning and Assistive Technology
 Certificate Literacy
 Certificate Special Education
 Certificate Higher Ed Counseling/Student Affairs
 Letter of Completion: Professional Counseling
 Licensure Prep

College of Health

Doctorate of Nursing Practice
 MA Communicative Disorders
 MED Health - School Health
 MS Exercise and Sport Physiology
 MS Exercise and Sport Physiology: Athletic Training
 MS Health and Physical Education - Sport/Exercise Physiology
 MS Physical Education

Note : TC is recommended for Teacher Certification

College of Health

MSA Sport and Athletic Administration
 MSN Public Health Nursing: Administration
 MSN Public Health Nursing: Education
 MSN Public Health Nursing: Integrative Health
 MPA Sport Management and Athletics
 MPH Public Health: Community Health
 MPH Public Health: Integrative Health
 MPH: Environmental Health
 MPH: Health Administration
 MPH: Nutrition
 TC Health & Physical Education
 TC School Nursing
 TC Speech Correction
 Certificate Adapted Physical Education
 Certificate Emergency Preparedness-Health
 Certificate Health Care Administration
 Certificate Health: Integrative Health
 Certificate Sports Management and Athletics

College of Visual and Performing Arts

MA Music History
 MM Composition
 MM Music Education: Performance
 MM Music Education: Research
 MM Music Education: Technology
 MM Music Performance
 MM Music: History and Literature
 MM Music: Piano Pedagogy
 MM Music: Theory & Composition
 TC Music Education
 Certificate Kodaly Methodology
 Certificate Music Technology
 Certificate Orff-Schulwerk
 Certificate Piano Pedagogy

Professional and Program Accreditations

West Chester University is accredited by

The Middle States Association of Colleges and Secondary Schools on Higher Education

Accreditation Board for Engineering and Technology (ABET)

Accreditation Council for continuing Medical Education (ACCME)

American Chemical Society (ACS)

American Council on the Teaching of Foreign Languages (ACTFL) - Recognized Programs

American Dietetic Association, Commission on Accreditation for Dietetics Educations (CADE)

American Orff Schulwerk Association (AOSA)

American Speech-Language-Hearing Association (ASHA)

Association to Advance Collegiate Schools of Business (AACSB)

Association for Childhood Education International (ACEI) - Recognized Programs

Commission on Accreditation of Allied Health Education Programs (CAAHEP)

Commission on Accreditation of Athletic Training Education (CAATE)

Commission on Collegiate Nursing Education (CCNE)

Committee on Accreditation for Respiratory Care (CoARC)

Council on Education for Public Health (CEPH)

Council for Exceptional Children (CEC) - Recognized Programs

Council on Social Work Education (CSWE)

Professional and Program Accreditations (Continued)

Council for Accreditation of Counseling and Related Educational Programs (CACREP)

Forensic Science Education Programs Accreditation Commission (FEPAC)

International Reading Association (IRA)

National Association of Schools of Music (NASM)

National Association for Sport and Physical Education (NASPE) - Recognized Programs

National Association for the Education of Young Children (NAEYC) - Recognized Programs

National Association of Schools of Art and Design (NASAD)

National Association of Schools of Theatre (NAST)

National Council for the Accreditation of Teacher Education (NCATE)

National Council for the Social Studies (NCSS) - Recognized Programs

National Council of Teachers for Mathematics (NCTM) - Recognized Programs

National Council of Teachers of English (NCTE) - Recognized Programs

National Science Teachers Association (NSTA) - Recognized Programs

National Environmental Health Science and Protection Accreditation Council (EHAC)

Organization of American Kodaly Educators (OAKE)

Pennsylvania Department of Education (PDE)



DEGREES CONFERRED

The following counts include only Baccalaureate (Primary and Secondary Major) and Master's degrees.

Academic Plan	Degree Year				
	2008-09	2009-10	2010-11	2011-2012	2012-13
College of Arts and Sciences					
Anthropology and Sociology					
Undergraduate					
Anthropology BA	15	12	11	8	20
Sociology BA	30	24	23	35	51
Total Undergraduate	45	36	34	43	71
Graduate					
Long-Term Health Care MSA	0	0	1	1	1
Total Graduate	0	0	1	1	1
Department Totals	45	36	35	44	72
Biology					
Undergraduate					
Biology BA	2	1	1	3	0
Biology BSED	8	6	9	7	7
Biology BS	34	28	36	39	42
Biology: Microbiology BS	7	6	4	3	10
Biology: Ecology BS	2	3	4	9	9
Biology: Medical Technology BS	1	1	3	2	3
Biology: Cell & Molecular BS	8	4	20	22	13
Total Undergraduate	62	49	77	85	84

Academic Plan	Degree Year				
	2008-09	2009-10	2010-11	2011-2012	2012-13
Biology					
Graduate					
Biology MS	5	3	3	2	8
Biology - Thesis MS	6	3	3	5	7
Total Graduate	11	6	6	7	15
Department Totals	73	55	83	92	99
Chemistry					
Undergraduate					
Chemistry BSED	4	2	1	0	4
Chemistry-Biology * BS	14	5	9	13	13
Chemistry BS	8	7	2	4	12
Biochemistry BS	3	1	2	6	9
Foreign & Toxicology Chemistry BS	7	10	6	7	11
Total Undergraduate	36	25	20	30	49
Department Totals	36	25	20	30	49
Communications Studies					
Undergraduate					
Communication Studies BA	116	123	142	119	160
Communication-Com/Med BSED	2	0	0 -	-	
Total Undergraduate	118	123	142	119	160
Graduate					
Communication Studies MA	13	7	18	7	11
Total Graduate	13	7	18	7	11
Department Totals	131	130	160	126	171

Academic Plan	Degree Year				
	2008-09	2009-10	2010-11	2011-2012	2012-13
Computer Science					
Undergraduate					
Computer Science BS	32	33	27	17	23
Total Undergraduate	32	33	27	17	23
Graduate					
Computer Science MS	10	11	7	7	5
Total Graduate	10	11	7	7	5
Department Totals	42	44	34	24	28
English					
Undergraduate					
Literature BA	7	0	0	0	0
English BA: Literature	60	46	37	25	24
English BA: Writings	0	12	36	36	43
English BSED: Literature	34	33	27	22	30
English BSED: Writings	0	2	11	8	10
Total Undergraduate	101	93	111	91	107
Graduate					
English MA	24	24	12	28	24
TESL MA	14	7	13	10	10
English - Non-Thesis Option MA	0	0	0	0	0
Total Graduate	38	31	25	38	34
Department Totals	139	124	136	129	141

Academic Plan	Degree Year				
	2008-09	2009-10	2010-11	2011-2012	2012-13
Geology & Astronomy					
Undergraduate					
Earth-Space Science BSED	5	2	7	5	7
Earth-Space Science - Geology BSED	0	0	0	0	0
Geoscience - Earth Systems BS	9	5	1	14	13
Geoscience: Geology BS	4	6	3	9	4
Geoscience: Environ Geoscience BS	1	0	0	0	0
Total Undergraduate	19	13	11	28	24
Graduate					
Geoscience MA	4	7	11	8	6
Total Graduate	4	7	11	8	6
Department Totals	23	20	22	36	30
Foreign Language					
Undergraduate					
French BA	9	5	8	6	9
German BA	5	2	5	2	10
Latin BA	5	1	2	0	1
Russian BA	3	2	1	4	6
Spanish BA	15	28	12	21	28
French BSED	0	0	0	0	0
German BSED	0	0	0	0	0
Spanish BSED	1	0	0	0	0
Total Undergraduate	38	38	28	33	54

Academic Plan	Degree Year				
	2008-09	2009-10	2010-11	2011-2012	2012-13
Foreign Language (continued)					
Graduate					
French MA	3	2	7	6	5
Spanish MA	2	3	2	3	0
French MED	1	1	0	1	2
Spanish MED	2	0	2	2	1
Total Graduate	8	6	11	12	8
Department Totals	46	44	39	45	62
History					
Undergraduate					
American Studies BA	0	0	1	4	1
History BA	82	84	87	107	101
Total Undergraduate	82	84	88	111	102
Graduate					
History MA	6	10	11	6	2
Holocaust & Genocide Studies MA	6	6	7	4	2
History MED	1	2	2	0	0
Total Graduate	13	18	20	10	4
Department Totals	95	102	108	121	106
Liberal Studies					
Undergraduate					
Liberal Studies: Arts & Science BA	23	24	29	35	45
Liberal Studies: Career Pre BA	0	2	1	0	0

Academic Plan	Degree Year				
	2008-09	2009-10	2010-11	2011-2012	2012-13
<i>Liberal Studies (continued)</i>					
Undergraduate					
Pharmaceutical Product Dev BS	11	10	15	7	14
Liberal Studies: Science /Math BS	9	8	10	9	12
Liberal Studies: Profession BS	247	160	202	221	206
Total Undergraduate	290	204	257	272	277
Department Totals	290	204	257	272	277
<i>Mathematics</i>					
Undergraduate					
Mathematics BA	3	5	2	3	8
Mathematics: Actuarial Science BS	-	-	-	4	3
Mathematics-Computer Science BA	0	0	0	0	0
Mathematics : Finance BS	9	13	6	2	2
Mathematics BSED	19	14	17	18	14
Mathematics: Industrial BS	-	-	1	2	2
Mathematics: Computational BS	-	-	1	0	4
Mathematics: Statistics BS	-	-	2	3	13
Total Undergraduate	31	32	29	32	46
Graduate					
Mathematics MA	9	7	5	10	5
Applied Statistics MS	25	24	24	15	24
Total Graduate	34	31	29	25	29
Department Totals	65	63	58	57	75

Academic Plan	Degree Year				
	2008-09	2009-10	2010-11	2011-2012	2012-13
Philosophy					
Undergraduate					
Philosophy BA	11	11	10	10	14
Philosophy-Religious Studies BA	5	3	1	4	2
Total Undergraduate	16	14	11	14	16
Graduate					
Philosophy MA: Applied Ethics	0	1	1	0	0
Philosophy MA: General	1	4	7	3	5
Total Graduate	1	5	8	3	5
Department Totals	17	19	19	17	21
Physics					
Undergraduate					
Physics BSED	1	1	2	2	2
Physics BS	5	5	1	8	8
Physics-Engineering BS	0	1	2	2	1
Total Undergraduate	6	7	5	12	11
Department Totals	6	7	5	12	11
Psychology					
Undergraduate					
Psychology BA	130	126	151	157	186
Total Undergraduate	130	126	151	157	186

Academic Plan	Degree Year				
	2008-09	2009-10	2010-11	2011-2012	2012-13
Psychology (continued)					
Graduate					
Psychology: Clinical MA	21	32	18	15	24
Psychology: General MA	2	1	1	2	4
Psychology: Industrial MA	7	12	10	11	11
Total Graduate	30	45	29	28	39
Department Totals	160	171	180	185	225
Women's Studies					
Undergraduate					
Women's Studies BA	5	4	10	11	7
Total Undergraduate	5	4	10	11	7
Graduate					
Leadership for Women MSA	0	0	0	0	0
Leadership for Women MPA	0	0	0	0	0
Total Graduate	0	0	0	0	0
Department Totals	5	4	10	11	7
<i>College of Arts and Sciences Undergraduate Totals</i>	1011	881	1001	1055	1,217
<i>College of Arts and Sciences Graduate Totals</i>	162	167	165	146	157
<i>College of Arts and Sciences Totals</i>	1173	1048	1166	1208	1374
College of Business and Public Affairs					
Accounting					
Undergraduate					
Accounting BS	91	107	99	77	75
Total Undergraduate	91	107	99	77	75
Department Totals	91	107	99	77	75

Academic Plan	Degree Year				
	2008-09	2009-10	2010-11	2011-2012	2012-13
<i>Criminal Justice</i>					
Undergraduate					
Criminal Justice BS	86	110	87	84	108
Total Undergraduate	86	110	87	84	108
Graduate					
Criminal Justice - Thesis MS	0	0	0	0	0
Criminal Justice MS	18	19	25	20	18
Total Graduate	18	19	25	20	18
Department Totals	104	129	112	104	126
<i>Economics and Finance</i>					
Undergraduate					
Economics BS	4	10	13	27	36
Finance BS	73	74	88	94	119
Total Undergraduate	77	84	101	121	155
Graduate					
Bus Admin: Economics-Finance MBA	7	5	0	0	0
Total Graduate	7	5	0	0	0
Department Totals	84	89	101	121	155
<i>Geography</i>					
Undergraduate					
Geography BA	13	9	4	4	7
Geography: Environmental BA	-	-	2	3	4
Geography-Urban/Regional PI BA	1	5	3	5	2

Academic Plan	Degree Year				
	2008-09	2009-10	2010-11	2011-2012	2012-13
Geography (continued)					
Undergraduate					
Geography-Geographic Analyses BA	1	2	1	4	4
Total Undergraduate	15	16	10	16	17
Graduate					
Geography MA	13	8	6	14	9
Regional Planning MPA	-	-	-	-	1
Regional Planning MSA	3	0	2	0	-
Total Graduate	16	8	8	14	10
Department Totals	31	24	18	30	27
Political Science					
Undergraduate					
Political Science-Applied Pub Policy BA	1	1	11	7	10
Political Science - Int'l Relations BA	20	19	25	16	15
Political Science BA	51	36	35	33	37
Total Undergraduate	72	56	71	56	62
Graduate					
Individualized Program MSA	4	1	0	0	-
Human Resource Mgmt. MSA	3	10	2	1	1
Public Administration MSA	0	4	0	0	-
Training & Developmental MSA	1	2	1	0	-
Nonprofit Administration MSA	1	5	0	1	-

Academic Plan	Degree Year				
	2008-09	2009-10	2010-11	2011-2012	2012-13
<i>Political Science (continued)</i>					
Graduate					
Individualized Program MPA	-	-	1	0	-
Human Resource Mgmt. MPA	-	-	8	4	1
Public Administration MPA	-	-	13	25	19
Training & Development MPA	-	-	1	0	-
Nonprofit Administration MPA	-	-	3	2	1
Total Graduate	9	22	29	33	22
Department Totals	81	78	100	89	84
<i>Public Policy and Administration</i>					
Graduate					
Human Resource Mgmt MPA	-	-	-	-	6
Human Resource Mgmt MSA	-	-	-	-	1
Nonprofit Administration MPA	-	-	-	-	2
Public Administration MPA	-	-	-	-	19
Public Administration MSA	-	-	-	-	0
Individualized Program MPA	-	-	-	-	0
Training & Development	-	-	-	-	0
Training & Development MSA	-	-	-	-	1
Total Graduate	-	-	-	-	29
Department Totals	-	-	-	-	29

Academic Plan	Degree Year				
	2008-09	2009-10	2010-11	2011-2012	2012-13
Management					
Undergraduate					
Business Management BS	135	124	132	135	133
Total Undergraduate	135	124	132	135	133
Graduate					
Bus Admin: General MBA	16	28	24	28	24
Bus Admin: Management MBA	1	1	1	0	0
Bus Admin: Executive MBA	0	1	0	0	0
Total Graduate	17	30	25	28	24
Department Totals	152	154	157	163	157
Marketing					
Undergraduate					
Marketing BS	115	98	98	100	118
Total Undergraduate	115	98	98	100	118
Graduate					
Bus Admin: Tech-Electronic MBA	1	1	1	0	0
Total Graduate	1	1	1	0	0
Department Totals	116	99	99	100	118
Social Work					
Undergraduate					
Social Work BSW	39	33	35	42	56
Total Undergraduate	39	33	35	42	56

Academic Plan	Degree Year				
	2008-09	2009-10	2010-11	2011-2012	2012-13
Social Work					
Graduate					
Social Work MSW	30	29	34	38	53
Total Graduate	30	29	34	38	53
Department Totals	69	62	69	80	109
College of Business and Public Affairs Undergraduate Totals					
	630	628	633	631	724
College of Business and Public Affairs Graduate Totals					
	98	114	122	133	156
College of Business and Public Affairs Totals					
	728	742	755	764	880
College of Education					
Counseling and Educational Psychology					
Graduate					
Counseling: Elementary MED	26	16	15	24	19
Counseling: Secondary MED	32	32	44	43	40
Counseling: Higher Ed/Stu Affairs MS	16	18	14	18	24
Total Graduate	74	66	73	85	83
Department Totals	74	66	73	85	83
Early Childhood and Special Education					
Undergraduate					
Early Childhood Education BSED	64	79	51	3	-
Special Education BSED	107	114	83	99	28
Special Education : 7-12 BSED	-	-	-	-	1
Special Education: PK-8 BSED	-	-	-	-	33
Total Undergraduate	171	193	134	102	62

Academic Plan	Degree Year				
	2008-09	2009-10	2010-11	2011-2012	2012-13
Early Childhood and Special Education (continued)					
Early Childhood Education MED	17	-	-	-	-
Total Graduate	38	23	32	23	30
Department Totals	209	216	166	125	92
Early and Middle Grades Education					
Undergraduate					
Early Childhood Education BSED	-	-	-	55	12
Early Grades Prep, PK-4 BSED	-	-	-	-	146
Elementary Education BSED	281	283	290	300	35
Middle Grades Prep, 4-8 BSED	-	-	-	-	26
Total Undergraduate	281	283	290	355	219
Graduate					
Applied Studies in Teaching and Learning MED	36	35	34	12	16
Early Childhood Education MED	-	22	23	21	1
Total Graduate	36	57	57	33	17
Department Totals	317	341	347	388	236
Literacy					
Graduate					
Reading MED	42	54	49	67	67
Total Graduate	42	54	49	67	67
Department Totals	42	54	49	67	67

Academic Plan	Degree Year				
	2008-09	2009-10	2010-11	2011-2012	2012-13
Professional and Secondary Education					
Graduate					
Secondary Education MED	29	11	13	14	15
Total Graduate	29	11	13	14	15
Department Totals	29	11	13	14	15
<i>College of Education Undergraduate Totals</i>	452	477	424	457	281
<i>College of Education Graduate Totals</i>	219	211	224	222	212
<i>College of Education Totals</i>	671	688	648	679	493
College of Health Sciences					
Health					
Undergraduate					
Public Health: Health Promotion BS	13	16	17	29	22
Public Health: Environmental BS	7	8	6	13	7
Nutrition and Dietetics BS	58	58	61	6	-
Health Science: General BS	7	11	14	11	17
Health Science: Respiratory Care BS	25	22	26	22	27
Total Undergraduate	110	115	124	81	73
Graduate					
Health: School Health MED	13	10	27	10	12
Public Health MPH: Community	29	29	23	32	40
Public Health MPH: Integrative	-	8	4	4	9

Academic Plan	Degree Year				
	2008-09	2009-10	2010-11	2011-2012	2012-13
Health (continued)					
Graduate					
Public Health MPH: Administrative	-	4	5	13	12
Public Health MPH: Environment	-	6	4	5	6
Public Health MPH: Nutrition	-	-	-	2	-
Public Health MPH: Management	-	-	-	-	8
Total Graduate	42	57	63	66	87
Department Totals	152	172	187	147	160
Kinesiology					
Undergraduate					
Health & Physical Education BS	96	90	86	88	80
Pre-Physical Therapy BS	0	3	14	16	34
Pre-Chiropractic BS	-	-	1	0	0
Pre-Occupational Therapy BS	-	-	1	5	14
Exercise Science Specialist BS	43	47	42	44	37
Total Undergraduate	139	140	144	153	165
Graduate					
Hlth & Phys Ed: Exercise Phys MS	9	8	6	7	10
Sport & Athletic Admin MPA	14	14	0	0	1
Sport Mgt & Athletics MPA	-	-	11	1	1

Academic Plan	Degree Year				
	2008-09	2009-10	2010-11	2011-2012	2012-13
<i>Kinesiology (continued)</i>					
Graduate					
MS in Physical Education	2	0	0	0	1
MS in Ex Sport Phys: Athl Trng	-	-	-	-	2
MS in Exercise/Sport Physiology	-	-	-	-	2
Total Graduate	25	22	17	9	17
Department Totals	164	162	161	159	182
<i>Nursing</i>					
Undergraduate					
Nursing BSN	62	61	97	108	74
Nursing BSN: 2nd degree	-	-	-	-	1
RN to BSN	31	40	51	71	84
Total Undergraduate	93	101	148	179	159
Graduate					
Nursing - Education MSN	4	2	0	10	17
Nursing MSN	8	5	14	1	0
Total Graduate	12	7	14	11	17
Department Totals	105	108	162	190	176
<i>Sports Medicine</i>					
Undergraduate					
Athletic Training BS	26	30	24	35	32
Total Undergraduate	26	30	24	35	32
Department Totals	26	30	24	35	32

Academic Plan	Degree Year				
	2008-09	2009-10	2010-11	2011-2012	2012-13
Nutrition					
Undergraduate					
Nutrition and Dietics BS	-	-	-	79	103
Total Undergraduate	-	-	-	79	103
Graduate					
Public Health MPH: Nutrition	-	-	-	-	14
Total Graduate	-	-	-	-	14
Department Totals	-	-	-	79	117
Communicative Disorders					
Undergraduate					
Communicative Disorders BA	38	40	51	41	59
Total Undergraduate	38	40	51	41	59
Graduate					
Communicative Disorders MA	27	25	31	32	28
Total Graduate	27	25	31	32	28
Department Totals	65	65	82	73	87
College of Health Sciences Undergraduate Totals					
	406	426	491	568	591
College of Health Sciences Graduate Totals					
	106	111	128	117	163
College of Health Sciences Totals					
	512	537	619	685	754
College of Visual and Performing Arts					
Applied Music					
Undergraduate					
Music: Performance Instrument	-	5	10	13	13
Music: Performance Jazz BM	-	1	1	3	2

Academic Plan	Degree Year				
	2008-09	2009-10	2010-11	2011-2012	2012-13
Applied Music (continued)					
Undergraduate					
Music: Performance Voice BM	-	5	2	4	7
Music: Performance Keyboard BM	14	3	2	1	2
Total Undergraduate	14	14	15	21	24
Graduate					
Music: Piano Pedagogy MM	4	1	1	4	0
Music Performance MM	8	6	11	10	8
Total Graduate	12	7	12	14	8
Department Totals	26	21	27	35	32
Art					
Undergraduate					
Studio Arts BA	1	4	2	0	1
Studio Arts BFA	70	38	41	35	47
Total Undergraduate	71	42	43	35	48
Department Totals	71	42	43	35	48
Music History					
Graduate					
Music History MA	0	1	1	0	-
Total Graduate	0	1	1	0	-
Department Totals	0	1	1	0	-

Academic Plan	Degree Year				
	2008-09	2009-10	2010-11	2011-2012	2012-13
<i>Music Theory, History and Composition</i>					
Undergraduate					
Music: Elective Studies BM	7	9	5	14	8
Music: Theory and Composition BM	8	3	7	1	7
Total Undergraduate	15	12	12	15	15
Graduate					
Music History MA	-	-	-	-	1
Music: Composition MM	0	1	0	0	0
Music: Music Theory MM	0	0	0	0	0
Music: Theory & Composition MM	0	1	0	0	0
Total Graduate	0	2	0	0	1
Department Totals	15	14	11	15	16
<i>Music Education</i>					
Undergraduate					
Music Education: Instrument BM	39	30	32	42	29
Music Education: Voice BM	15	24	11	22	15
Music Education: Keyboard BM	6	7	3	5	7
Total Undergraduate	60	61	56	69	51
Graduate					
Music Education MM - Performance	18	15	10	7	14

Academic Plan	Degree Year				
	2008-09	2009-10	2010-11	2011-2012	2012-13
Music Education (continued)					
Graduate					
Music Education MM-Technology	2	3	1	5	2
Music Education MM: Research	-	-	2	1	1
Total Graduate	20	18	13	13	17
Department Totals	80	79	59	82	68
Theatre Arts					
Undergraduate					
Theatre Arts: Performance BA	6	2	3	6	4
Theatre Arts: Music Theatre BA	7	4	10	4	9
Theatre Arts: Tech Production BA	3	5	6	1	3
Theatre Arts: General BA	4	6	8	6	3
Theatre Arts: Dance BA	-	-	-	1	2
Total Undergraduate	20	17	27	18	21
Department Totals	20	17	27	18	21
<i>College of Visual and Performing Arts Undergraduate Totals</i>	180	146	143	158	159
<i>College of Visual and Performing Arts Graduate Totals</i>	32	28	26	27	26
<i>College of Visual and Performing Arts Totals</i>	212	174	169	185	185
University Undergraduate Totals	2,679	2,558	2,692	2,869	2,972
University Graduate Totals	617	631	665	645	714
University Totals	3,296	3,189	3,357	3,514	3,686



TUITION & FEES

Tuition and Fees by Semester

Tuition Category	2008	2009	2010	2011	2012	2013
Undergraduate Tuition						
Full-Time In-State	\$2,679.00	\$2,777	\$2,902	\$3,120	\$3,214	\$3,311
Full-Time Out-of-State	\$6,698	\$6,943	\$7,255	\$7,800	\$8,035	\$8,278
Per Credit In-State	\$230	\$231	\$242	\$260	\$268	\$276
Per Credit Out-of-State	\$558	\$579	\$605	\$650	\$670	\$690
Undergraduate Fees						
Full-Time In-State	\$599	\$726	\$937.85	\$938.65	\$1,096	\$1,114
Full-Time Out-of-State			\$996.85	\$1,027.65	\$1,188	\$1,209
Per Credit In-State	\$50	\$60	\$129.92	\$157.72	\$91	\$92
Per Credit Out-of-State			\$154.92	\$165.72	\$99	\$100
Graduate Tuition						
Full-Time In-State	\$3,215	\$3,333	\$3,483	\$3,744	\$3,861	\$3,978
Full-Time Out-of-State	\$5,144	\$5,333	\$5,573	\$5,616	\$5,796	\$5,967
Per Credit In-State	\$357	\$370	\$387	\$416	\$429	\$442
Per Credit Out-of-State	\$572	\$593	\$619	\$624	\$644	\$663
Graduate Fees						
Full-Time In-State	\$500	\$664	\$807.20	\$892.32	\$1,054	\$1,067
Full-Time Out-of-State			866.2	\$982.32	\$1,144	\$1,157
Per Credit In-State	\$50	\$63	\$214.02	\$100.37	\$105	\$106
Per Credit Out-of-State			158.24	\$110.37	\$115	\$116
Residence Halls						
Meal Plan*	\$1,114	\$1,170	\$1,189	\$1,218	\$1,247	\$1,272

*14 Meals per week + \$250 Flex Dollars



LIBRARY RESOURCES

Library Statistics

FY 2010-2011 through 2012-2013

Holdings	2010-2011	2011-2012	2012-2013	One Year Difference
Library Holdings				
Volumes	760,962	759,153	757,875	1,278
Microforms	926,498	926,451	926,544	93
E-Books	640,761	643,370	654,989	11,619
Audio/Video units*	140,289	199,454	227,395	27,941
Circulation (General & Reserve)	76,977	64,373	57,195	-7,178
Holdings Total	2,468,510	2,528,428	2,566,803	38,375
Total FTE Staff (includes student assistants)	55.1	45.92	45.58	-0.34

*Includes tapes, CDs, DVDs

Other Library Materials	2012-2013
Items Digitized by WCU Library	1,691
Digital Art Images	2,500,000
Digital Pamphlets, Reports, etc.	364,395
Digital Manuscript Pages	5,200,000

For questions /comments or recommendations for other data to include in the Fact Book, please contact Nilima Inamdar, Office of Institutional Research, WCU, 887, Matlack Street, West Chester PA 19381. Email: ninamdar@wcupa.edu Phone: 610-436-2456